

MOTION ON THE WATER

CULTURAL LOOP



Dead end circulation
Maashaven is natural divider between Kattendrecht and Tarwewijk, creating circulation issues.

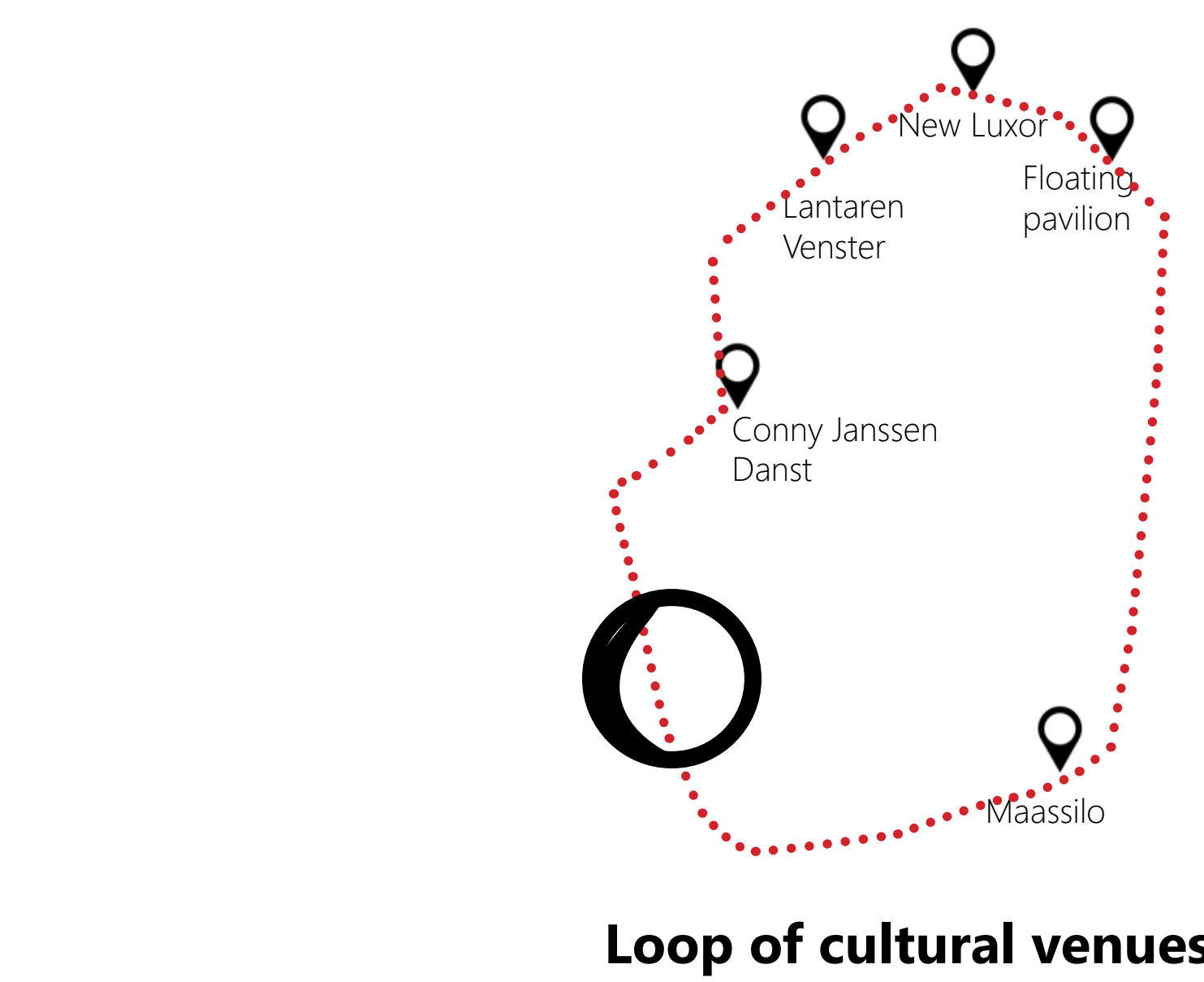
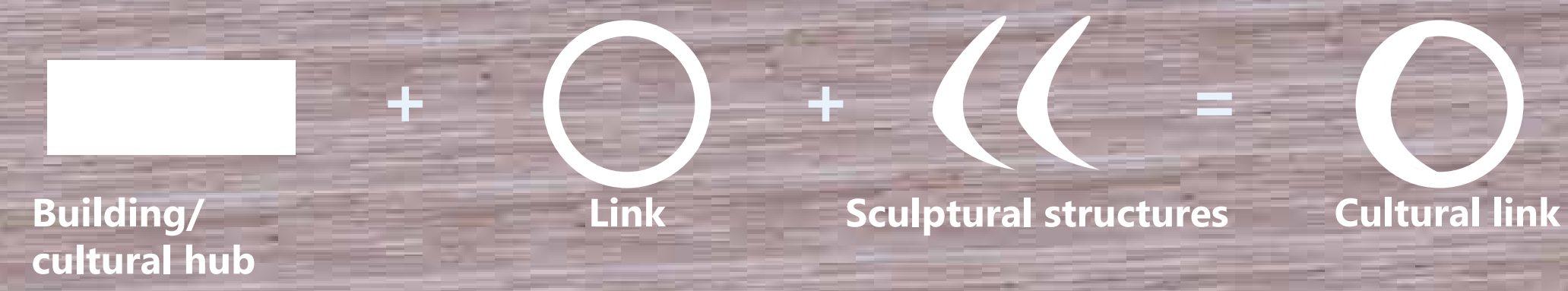


One circulation loop
A new bridge will tie together the cultural area by connecting landscape and cultural venues in a natural continuous loop.

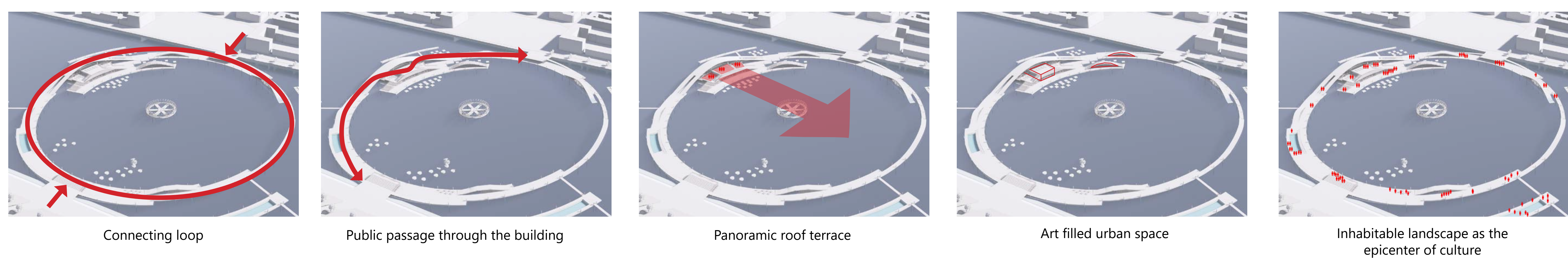
- WHY?**
- empty harbor
 - poorly designed waterfront
 - lack of good public space
 - lacking connection with other cultural venues

- HOW?**
- by connecting two waterfronts
 - by creating harmony in urban setting
 - by improving public space
 - by adding extra layer of public activities
 - by bringing cultural events on water

- WHAT?**
- cultural hub with various events and activities
 - qualitative indoor and outdoor public space
 - adjustable space according to event and/or weather conditions

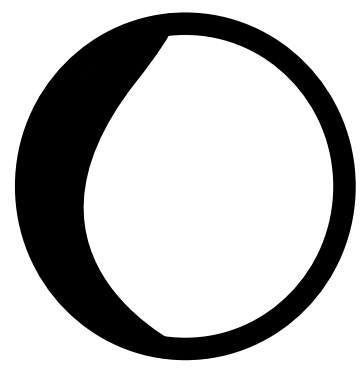
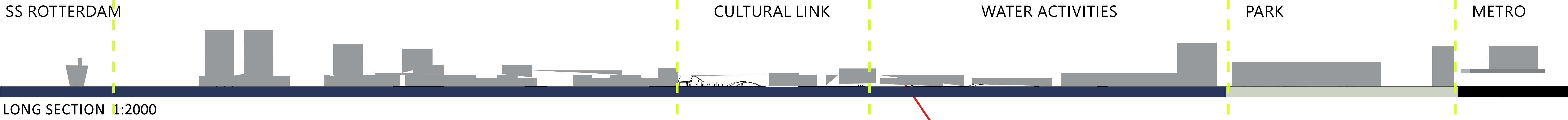
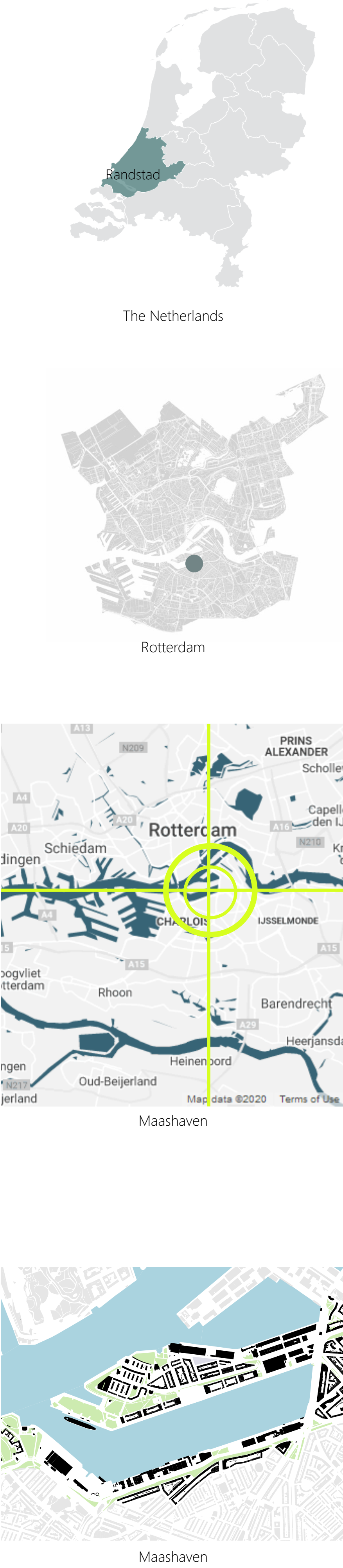


DESIGN CONCEPT FOR ART PERFORMING CENTER



LOCATION

The cultural link is spreading from the Ketendrecht waterfront to the Tarwewijk waterfront. Which is 324m wide. In the other direction, the harbor is 1,6km long starting from the metro line to SS Rotterdam ship. Urban acupuncture is excellent sitting in the urban landscape. The maximum height is 12m, which is not exceeding the closest buildings



Type: public building
Client: Rotterdam municipality, funding
Size: Indoor 5829 m², outdoor 19516 m²
Location: Maashaven
Status: concept

Motion on the water creates a frame for contemporary art, films, festival performances, leisure, and water activities. Architectural intervention is filled with art and public space by the waterfront around Maashaven. Is located on Maashaven between Katendrecht and Tarwewijk. It connects South and North. It brings together citizens, tourists, organizations - contemporary arts, cultural schools- into a closed loop that is

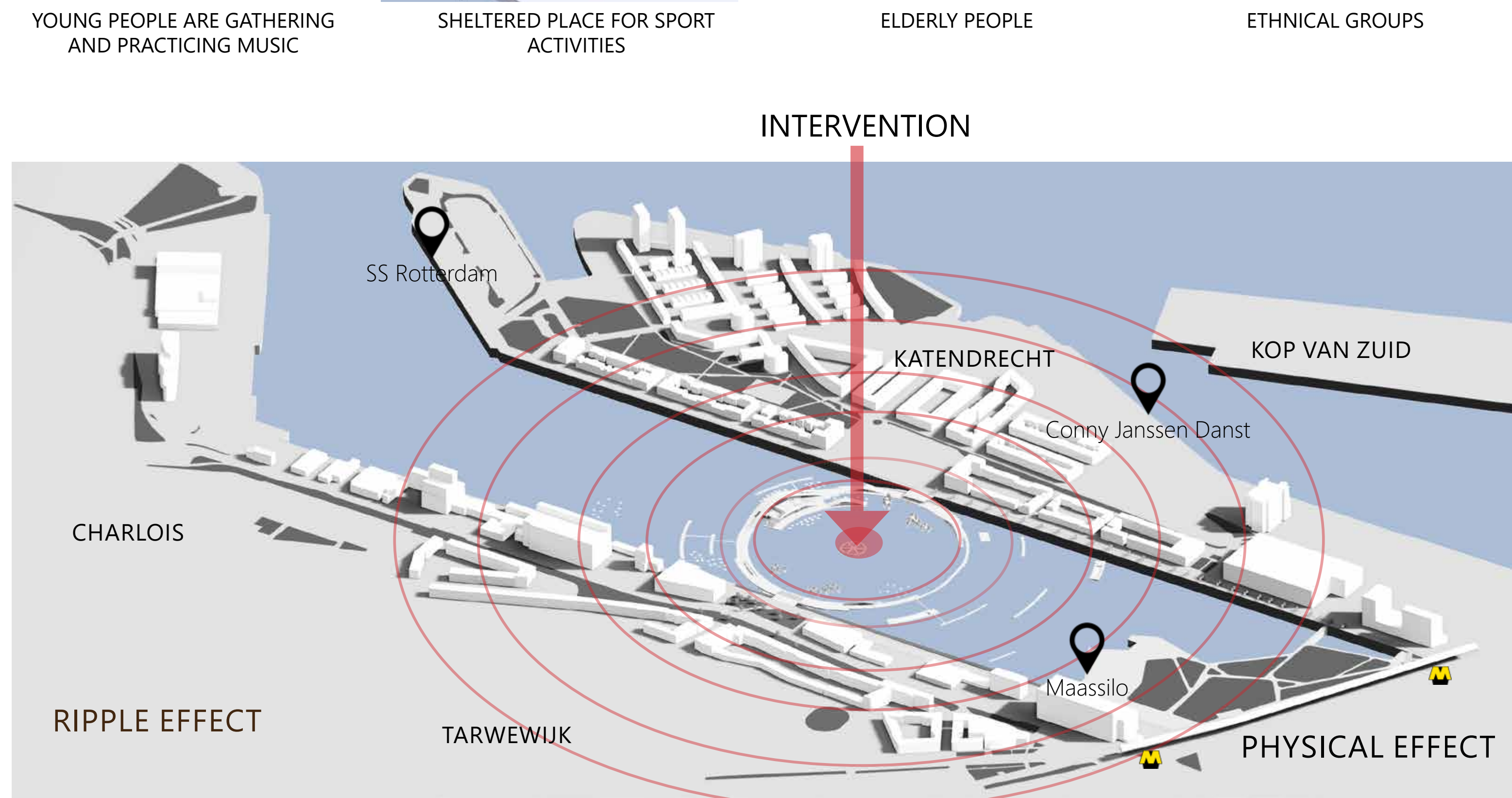
the epicenter of Rotterdam South.
"Motion on the water" is designed as a single loop of vast public space that includes a promenade with a panoramic view. Promenade pas by a dance rehearsal studio, via series of steps and ramps, reaches roof terraces and provides spectacular views. Performance center is a transparent building with tinted glass walls,

which gives a possibility to everyone to see what is happening inside. Outdoor spaces are used as stages for concerts, performances, festivals, and art installations. Upon stepping on "Motion on the water" viewing platform unveils the view towards the entire circular intervention. Magnificent.
Upon arrival at Art Performance center, visitors en-

ter the lobby where they can enjoy a significant view towards the harbor and can have fine dining. On the same floor is district size performing space with a maximum of 400 flexible seating configurations.
Center provides rehearsal studios for artists, storage spaces, 3 generous roof terraces which can be adjusted for various events and performances.

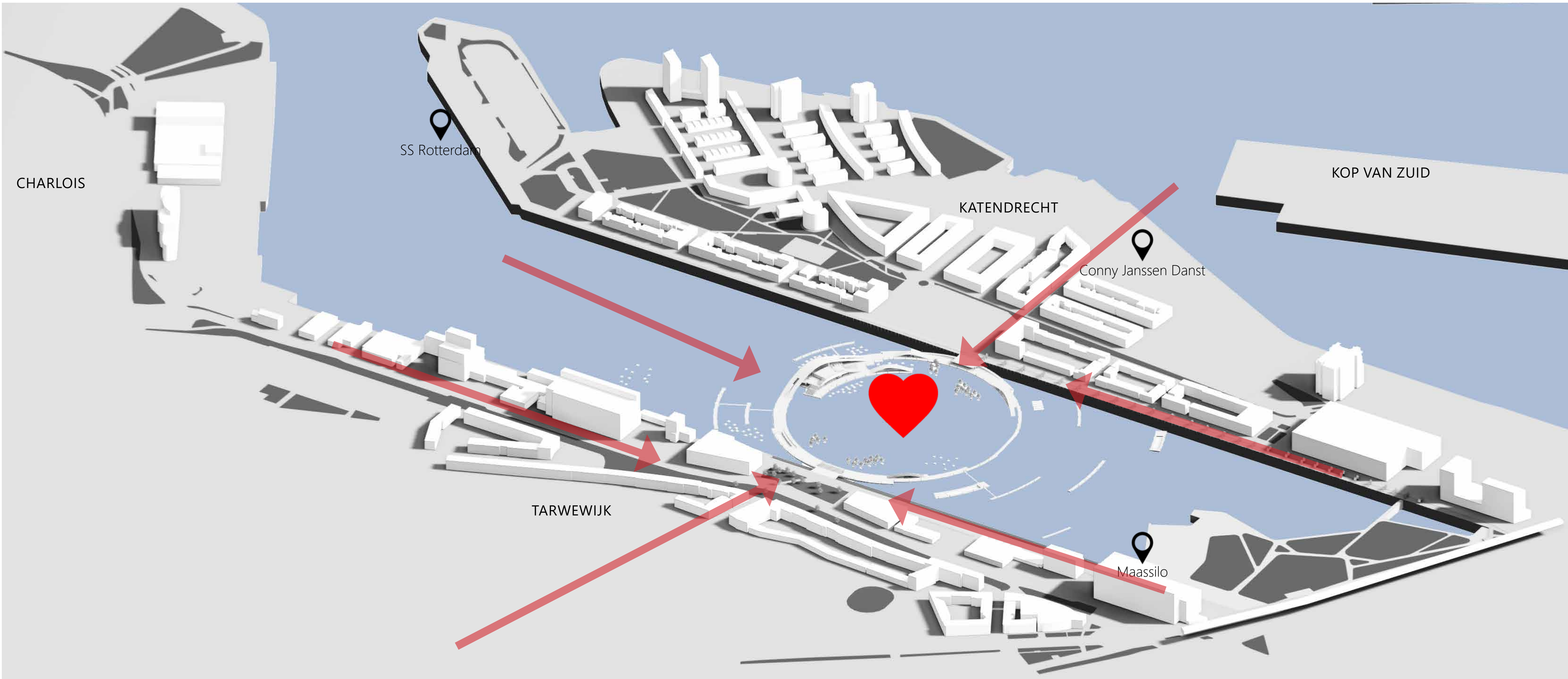


URBAN ACUPUNCTURE

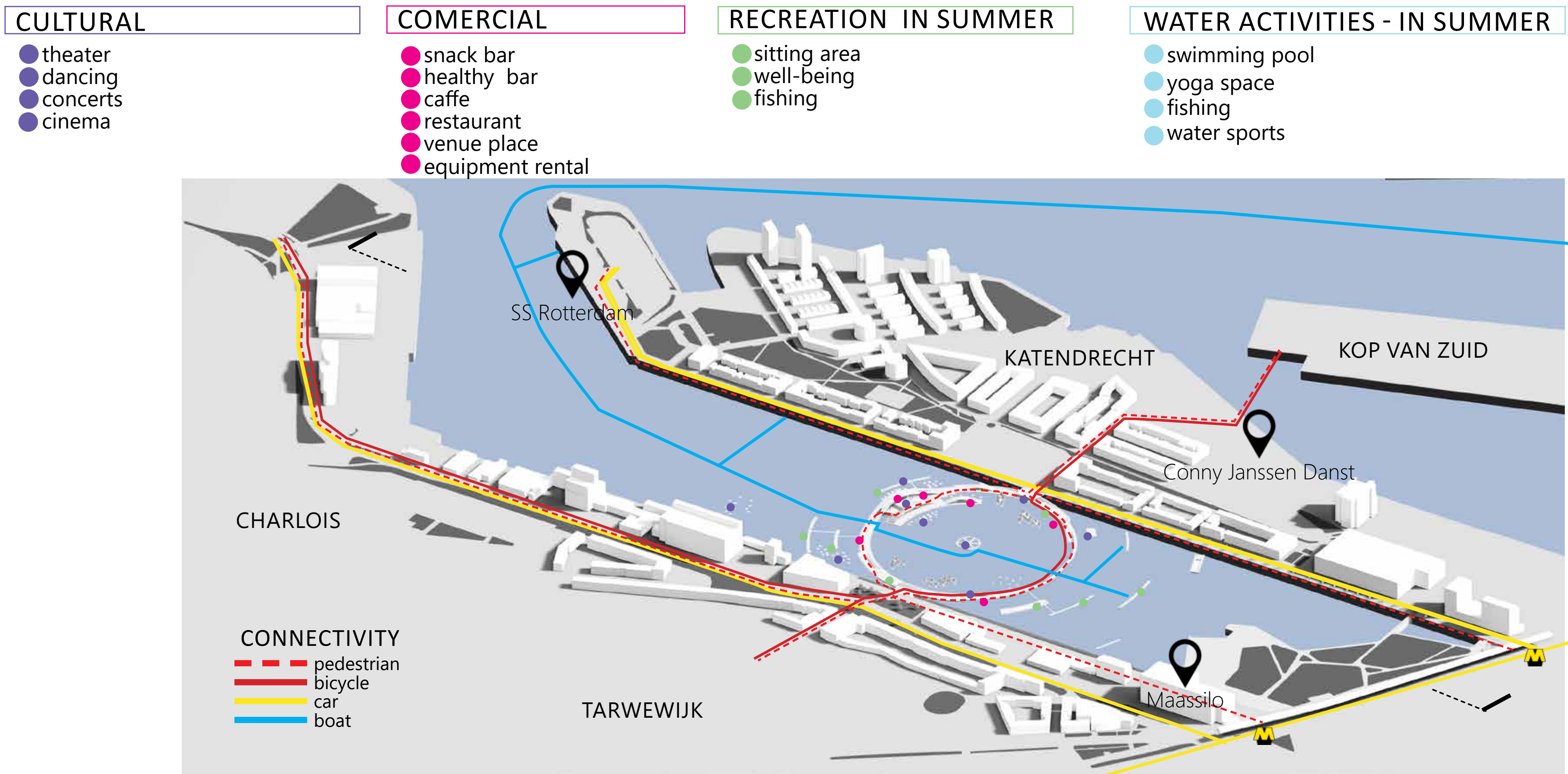


Cultural link is urban acupuncture that changes the urban environment and connects the north and the southern districts of Rotterdam. It acts as a multifunctional park – square on the water which is serving as a physical connecting element between Tarwewijk and Katendrecht. It consists of inhabitant movement, dancers moves, waves, playfulness, and various activities. It is a merging and connecting element on the water. It will bring back the vibrant historical vibes that Rotterdam is known for but in a different and new exciting way. The urban acupuncture intervention's ripple effect will excite and invite more people and connect the hearts.

Cultural link "Motion on the water" main function is a center for cultural performing arts with 500 indoor seats. Which includes vast public outdoor spaces for various activities. The link serves as a pedestrian and bicycle bridge for the city residents.



LAYERS

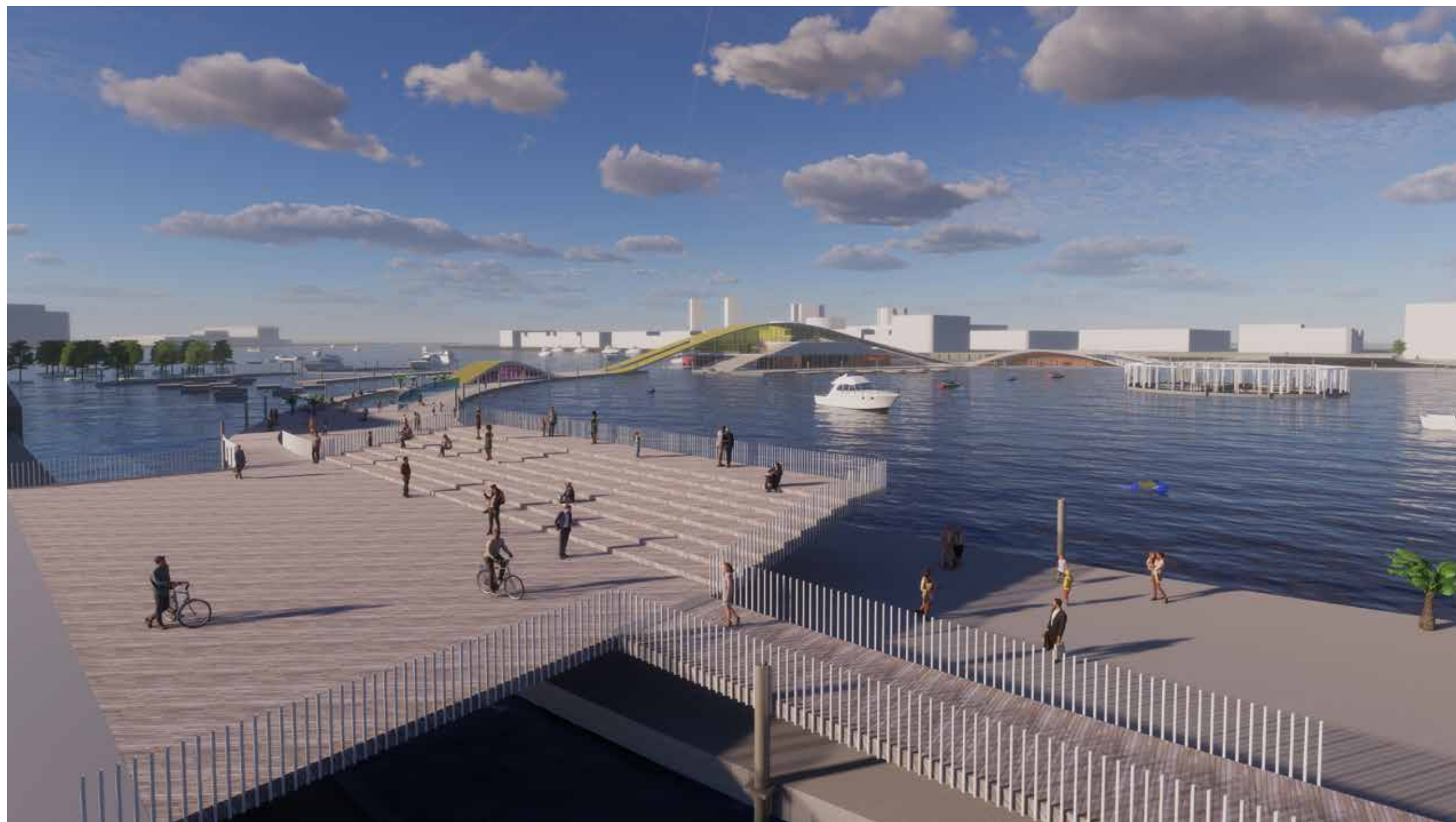
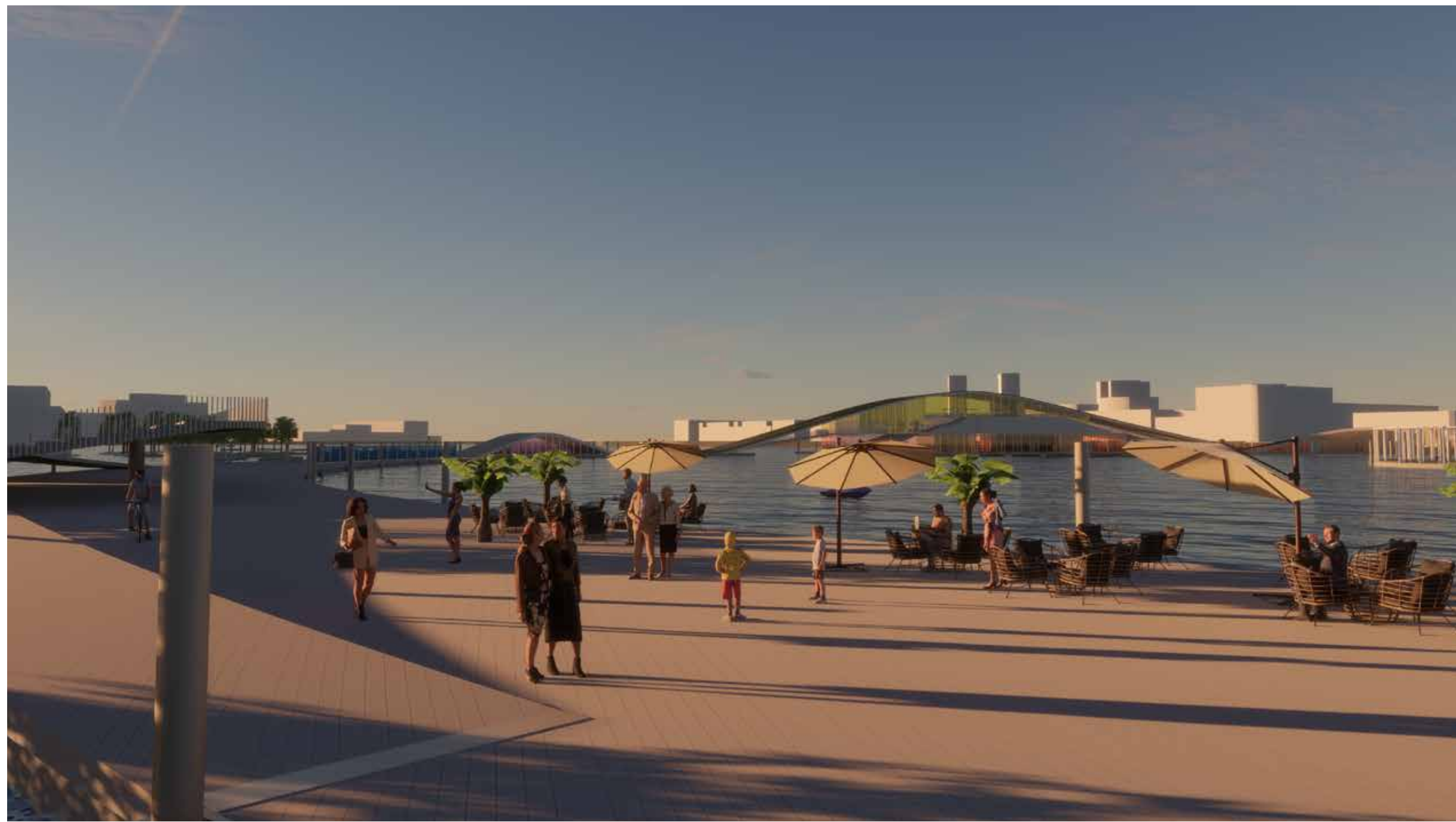


Connectivity – the link is connecting two districts Katendrecht and Tarwewijk. Bicycles and pedestrians are crossing the link at various levels. Extra small decks in the water are serving as stoping elements for private boats and yachts. The inner part of the intervention is accessible via integrated bridges.

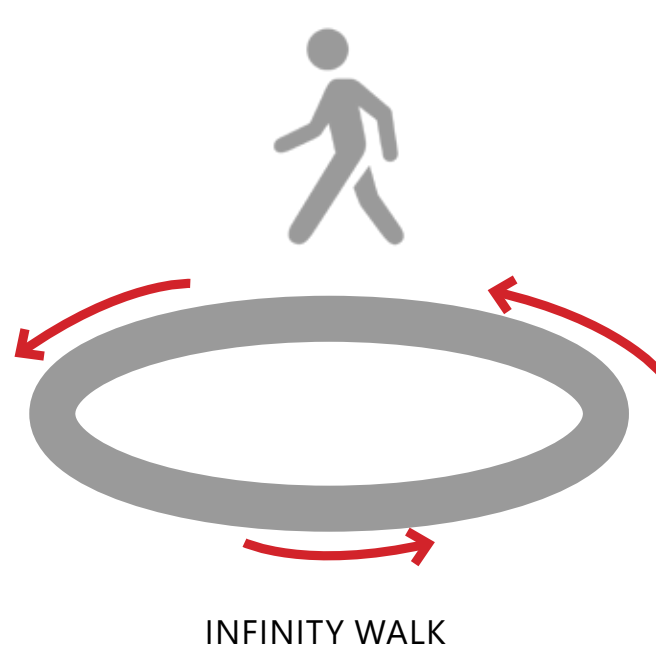
Water activities - in summer include various activities. Starting from floating swimming pools for kids and adults with clean water to water skiing, wakeboard, and jetski. During the summer this part of the water square becomes the main activity during the day.

Commercial - In designated places are located commercial areas with a small shop, coffee places, restaurants, and rentable spaces for various events.

Cultural - main function is to invite the spectators to different types of indoor and outdoor performances. On the standard stage or outside on floating stages, that can be grouped and combined in the random and most inventive solutions. The enormous public space gives an extra opportunity to have various outdoor concerts and even outdoor cinema evenings above the water. As a cultural and artistic element, it has an innovative and attractive night landscape. Such an approach will also help to keep the place safer and more pleasant.



PROGRAM - FUNCTIONS - ATMOSPHERES



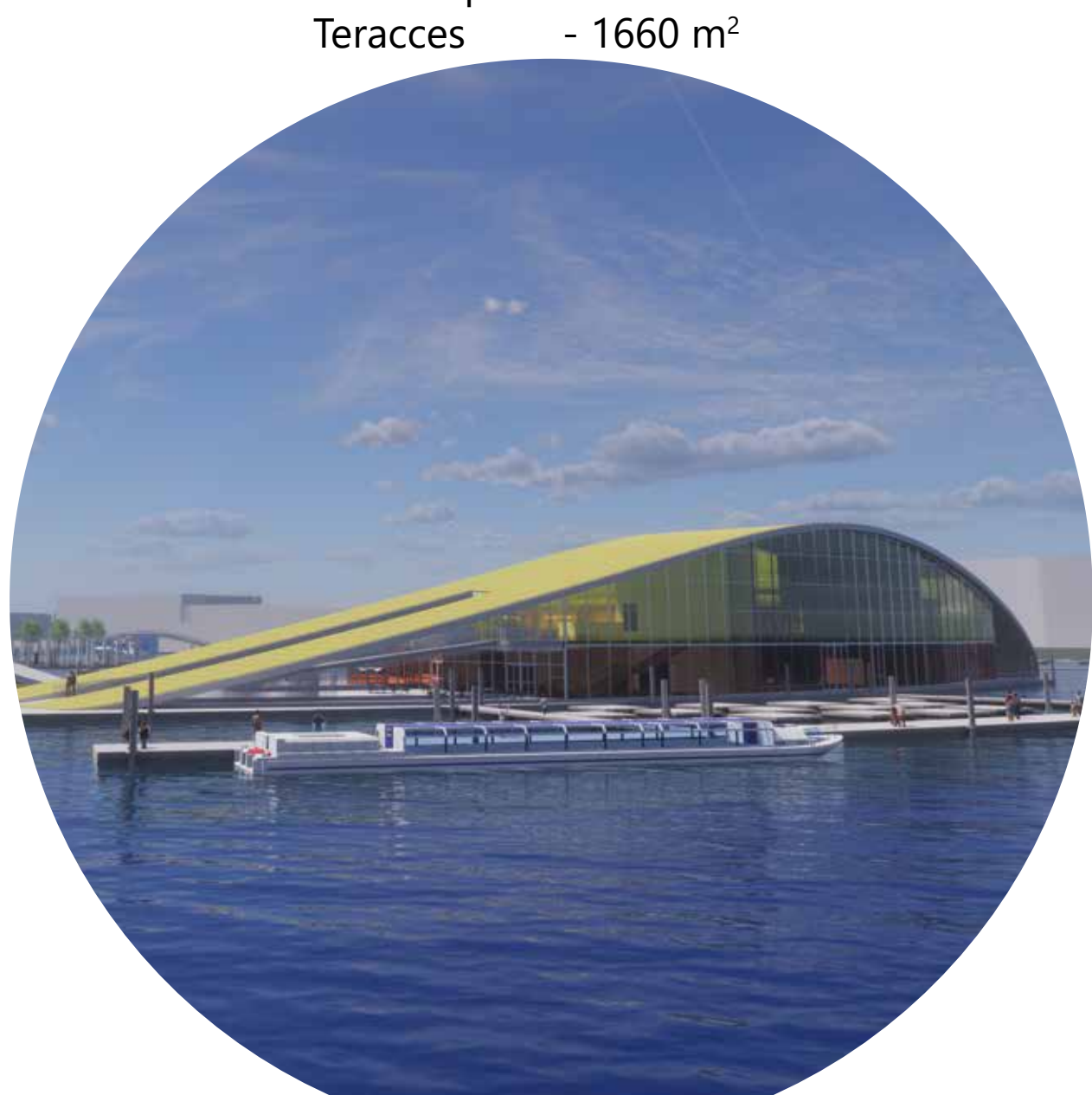
OUTDOOR SWIMMING
POOL



FLOATING STAGE



PERFORMING ART CENTER
Indoor space - 4726 m²
Terraces - 1660 m²



REHEARSING STUDIOS
Indoor space - 306 m²



MOORING ELEMENT



LATVIAN SUN SIGN
(meaning - eternal, movement)



OUTDOOR SWIMMING
POOL



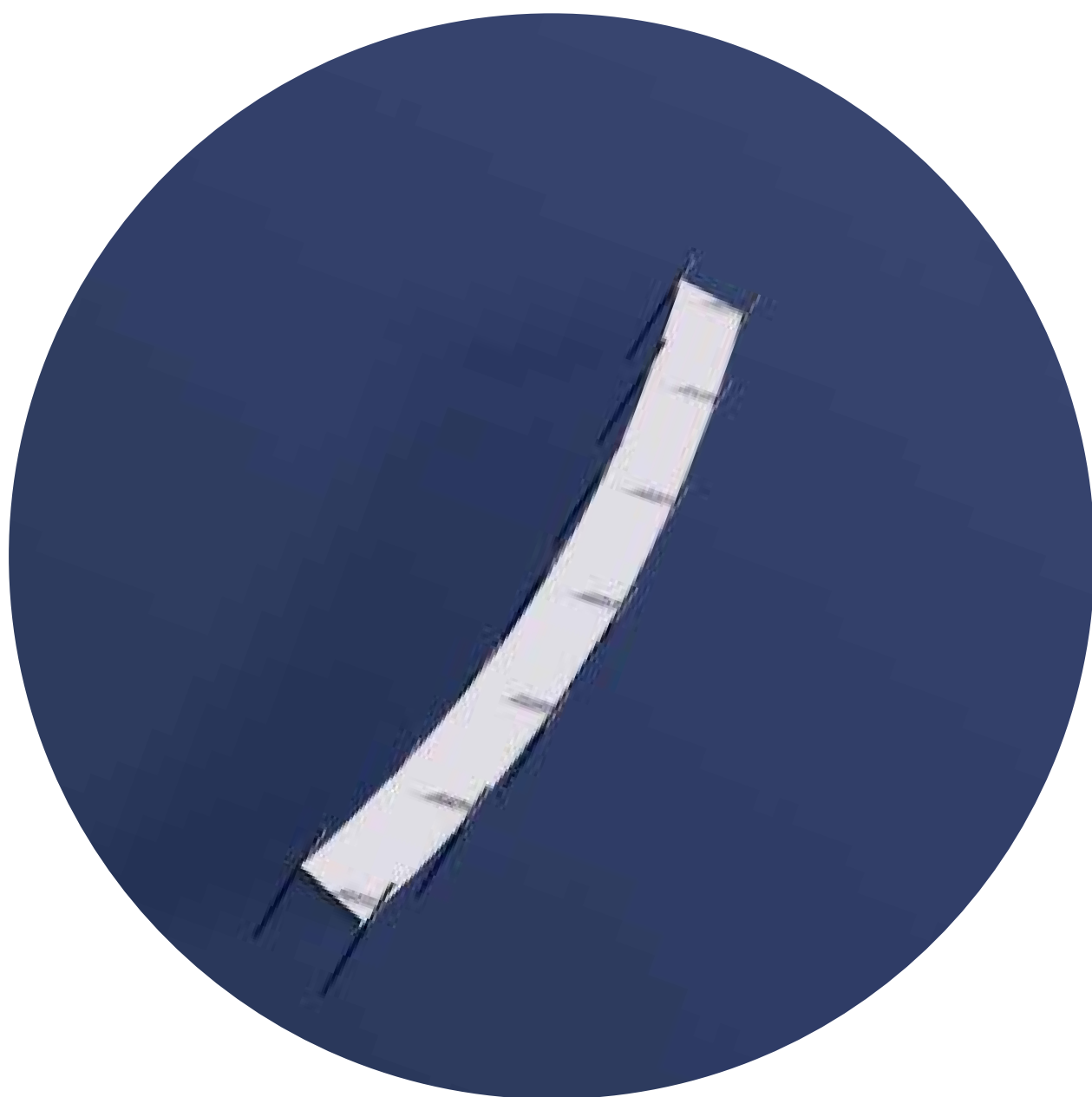
INFOCENTER/CAFFE



JETTY



FLOATING STAGES

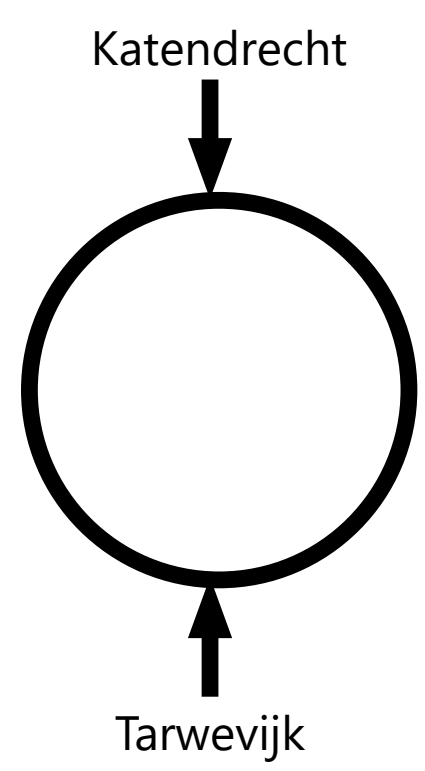


FLOATING OASIS

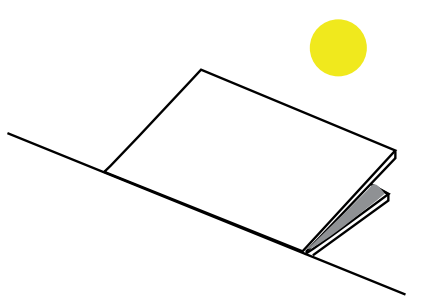


MULTIFUNCTIONAL SPACE
Indoor space - 234 m²
Indoor space - 228 m²

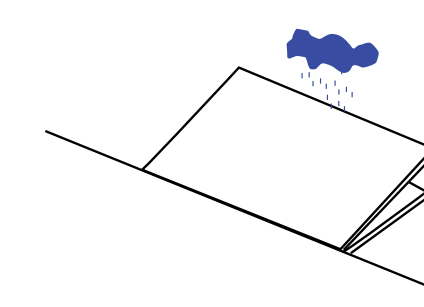
1 CONNECTING DISTRICTS



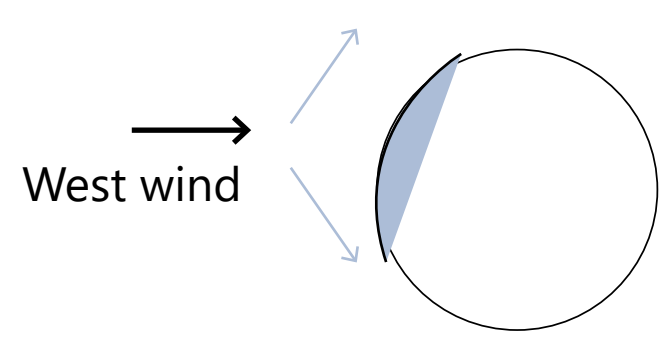
2 CLIMATE



Sun shade
The object is well lit. Few design objects provide shadow from direct sunlight - under the pavilion, viewing platform and the big wave

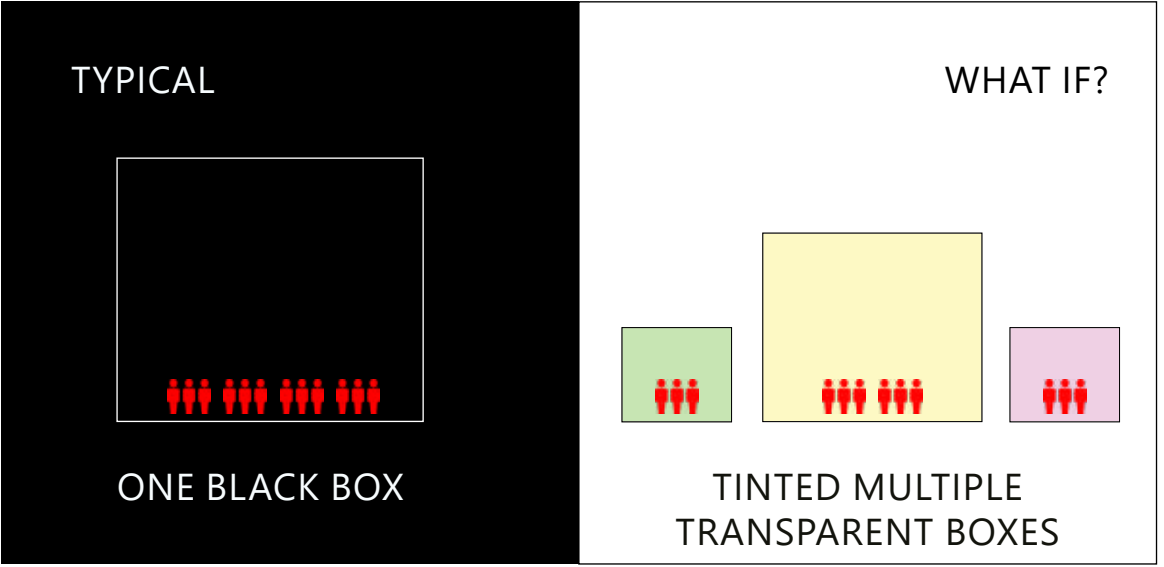


Rain shelter
Few design objects provide shelter - under the pavilion, under the viewing platform, and the big wave



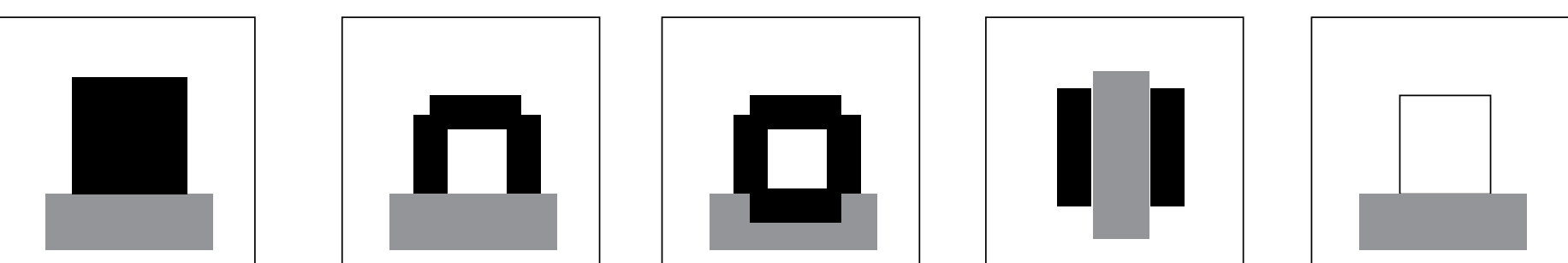
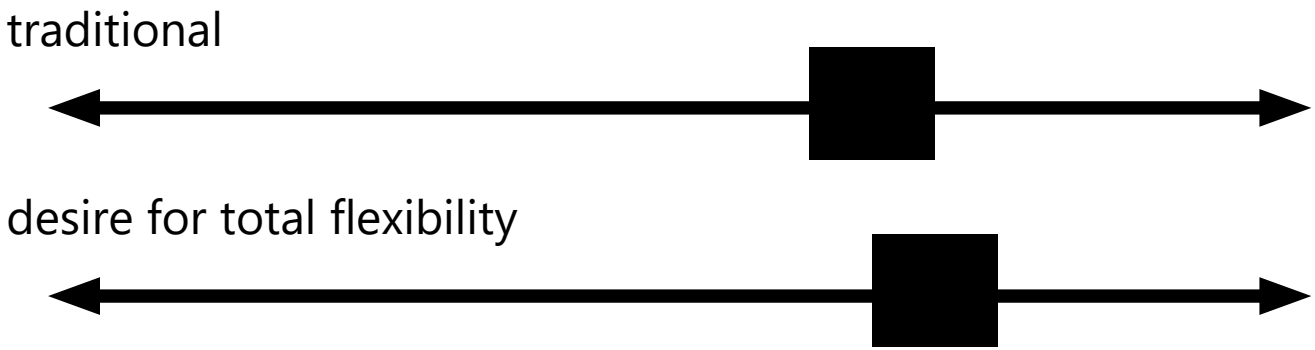
Wind
The curved and high wall is serving as a barrier to reduce the wind force and protect smaller buildings

3 TRANSPARENT



The art performance center is the heart of this intervention. This project has different look than the usual one. What if the typical black box takes a different shape and is transparent? That helps to attract more people and to experience different emotions. It is part of the experience when crossing this bridge to see how artists are performing and using the space. Be transparent, open, and inviting. It is part of the social invitation and equal possibilities for all citizens.

4 FLEXIBLE PERFORMANCE CONFIGURATIONS



Motion on the water is designed in a way that most of the elements are flexible and adjustable according to the choreographer or event. Always in motion. It applies to the indoor and outdoor elements.

5 FLEXIBLE STAGE LOCATIONS



On roof
the curved roofs in specifically designed areas can be used as extra stages. Keeping in mind the proper dancing surface. The spectators can be on the decks and platforms or their boats.



Cafe performance
the first-floor terrace can be used as a cafe area where dancers are dancing in between the coffee tables. Make in integrated and sensational experience.



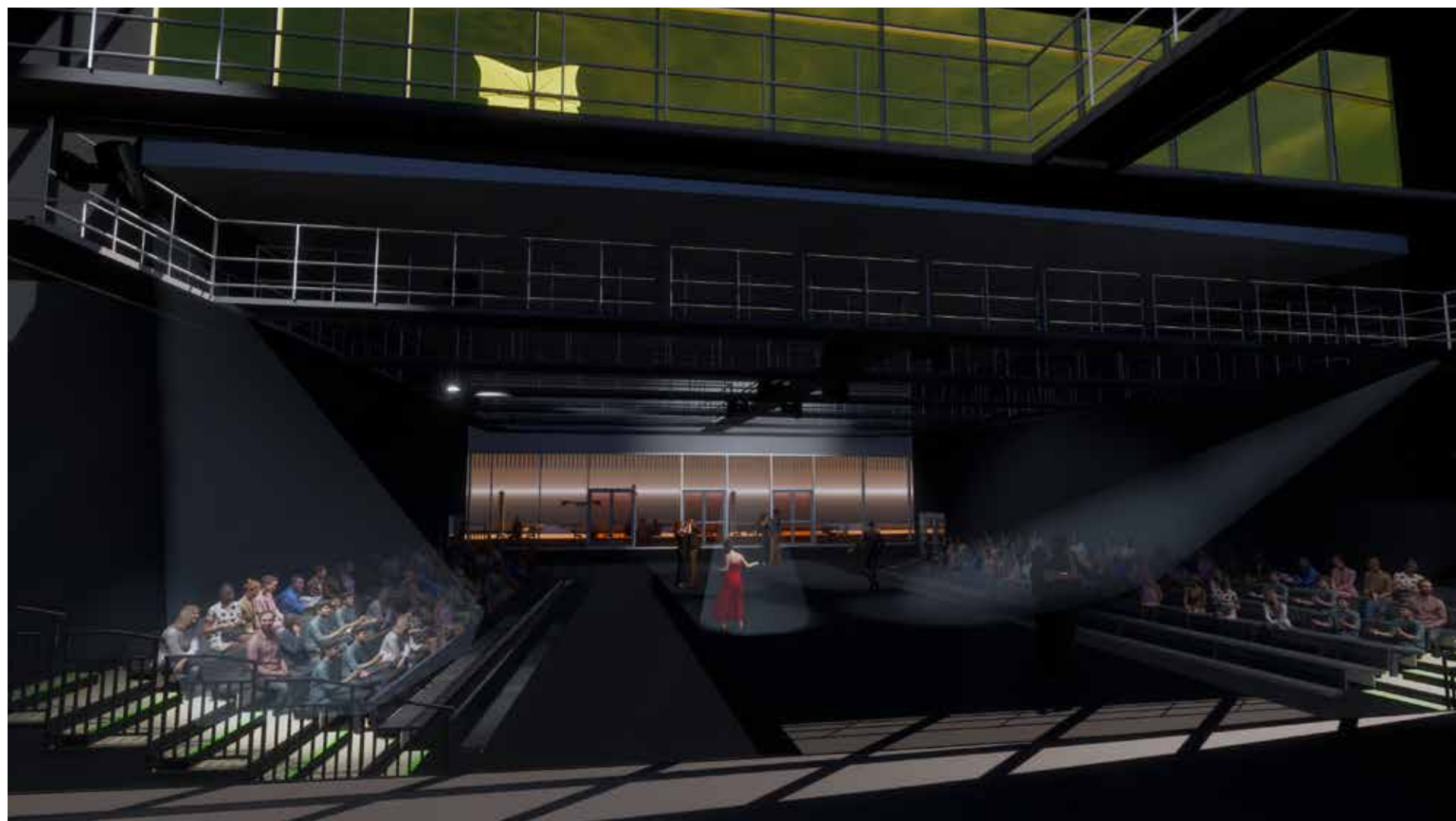
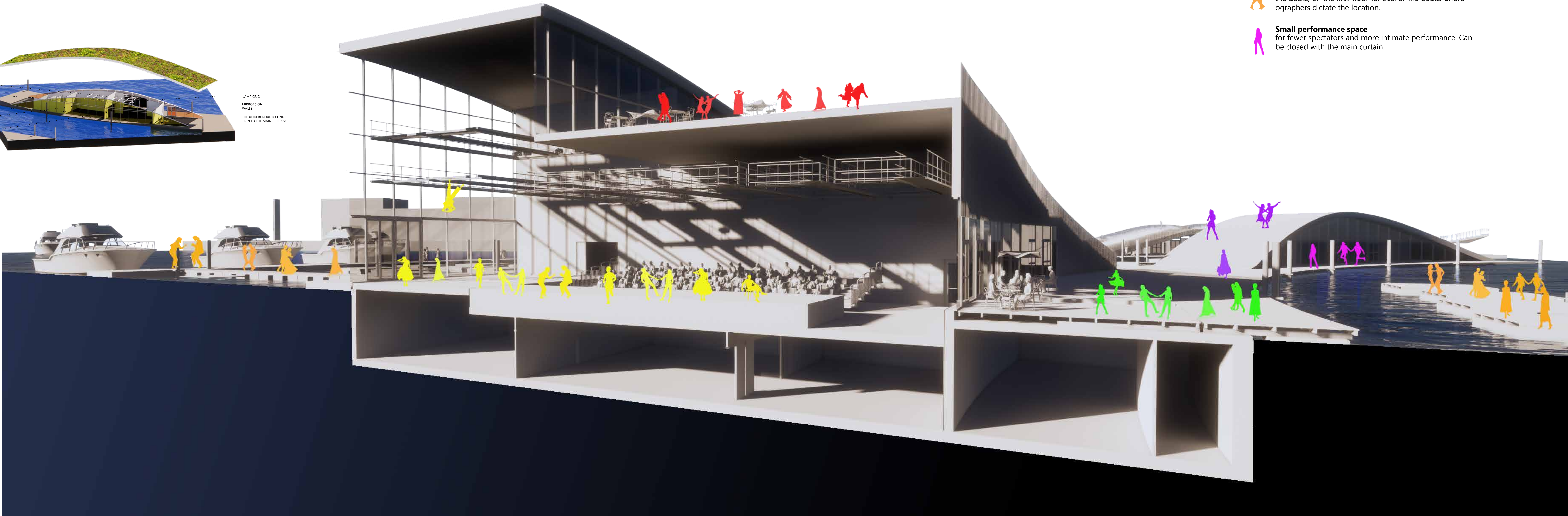
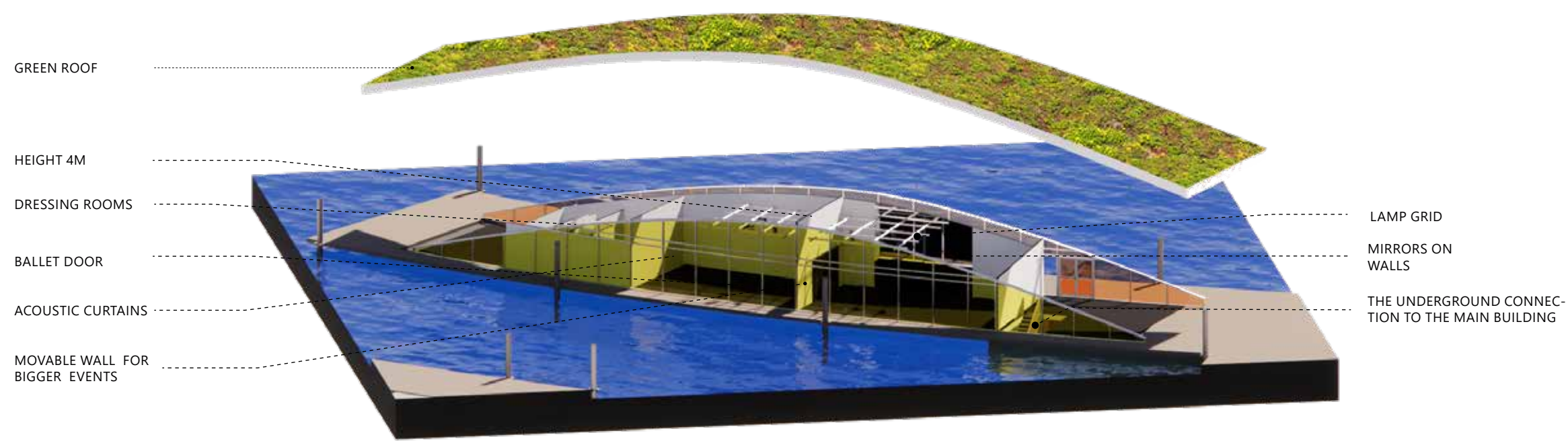
Indoor performance
can be used in various performance configurations with an open or closed-off main curtain. The main stage has a glass back wall which gives an unforgettable feeling and excitement, especially in late evening performances.



Floating performance
most intriguing and exciting. Floating stages can be grouped in specific configurations. Spectators can be on the decks, on the first-floor terrace, or the boats. Choreographers dictate the location.




Small performance space
for fewer spectators and more intimate performance. Can be closed with the main curtain.



SECTIONS

DESIGN PRINCIPLES

1



Archimede's buoyancy principle

Oasis cruise ship:

- lenght

360m

- height

72m

- draft

9,3m

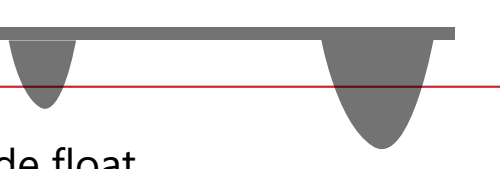
- width

66m

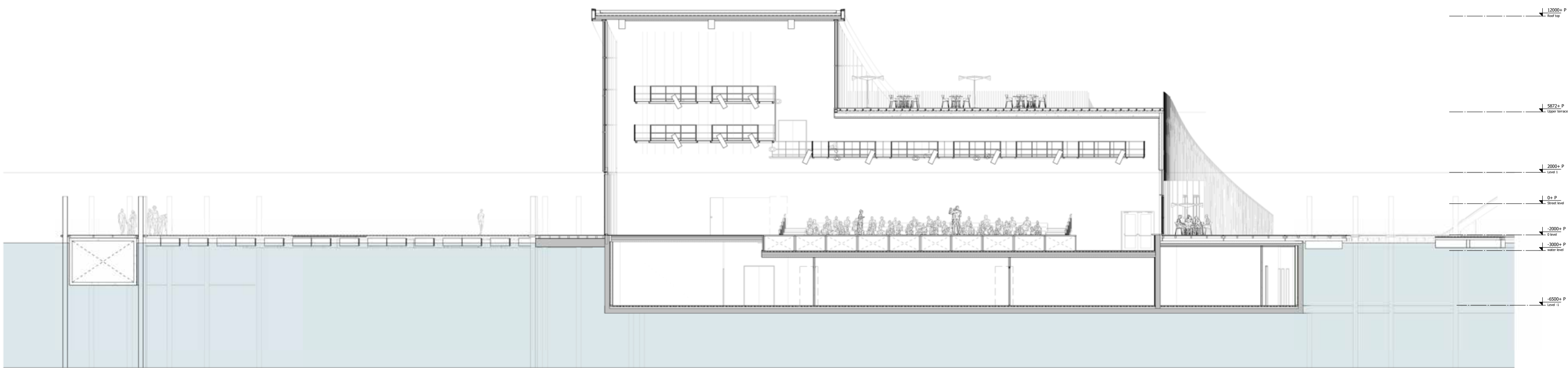
- capacity

6296

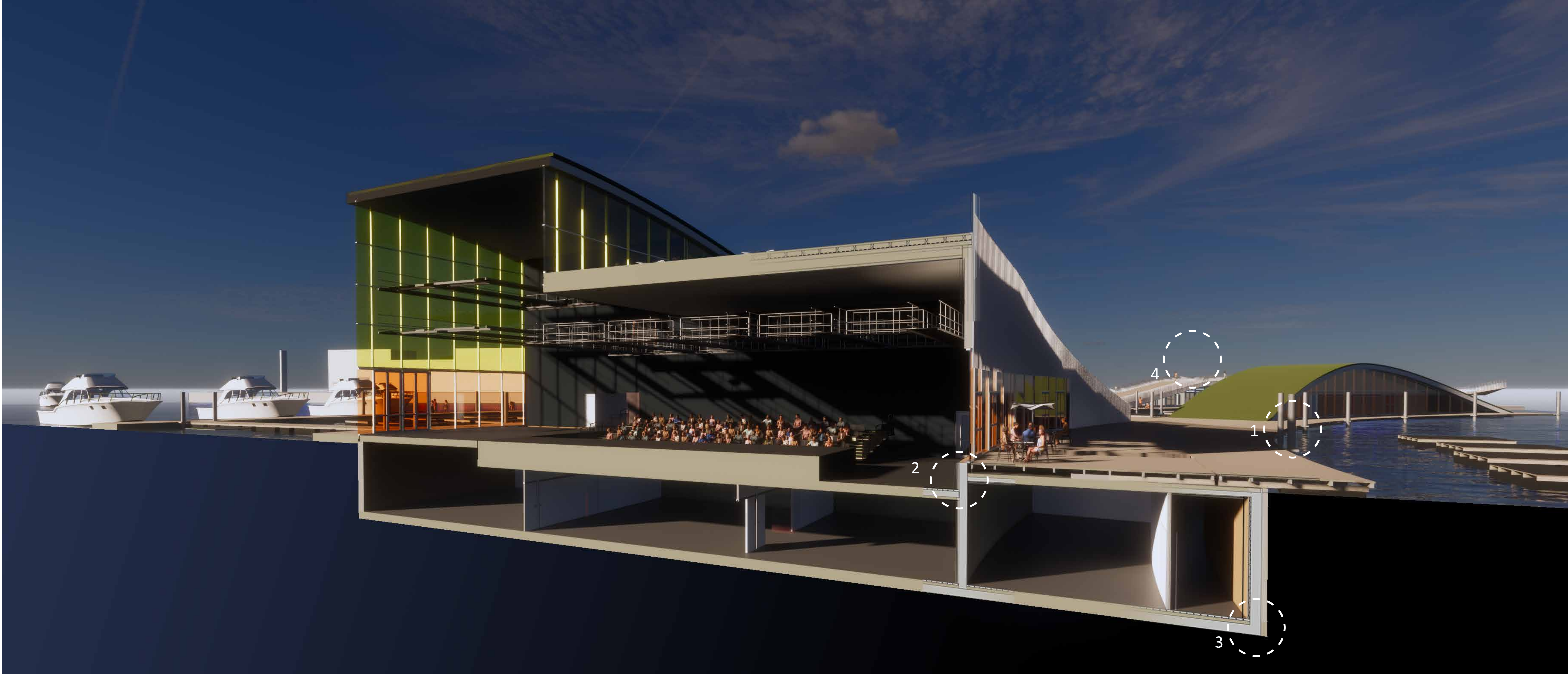
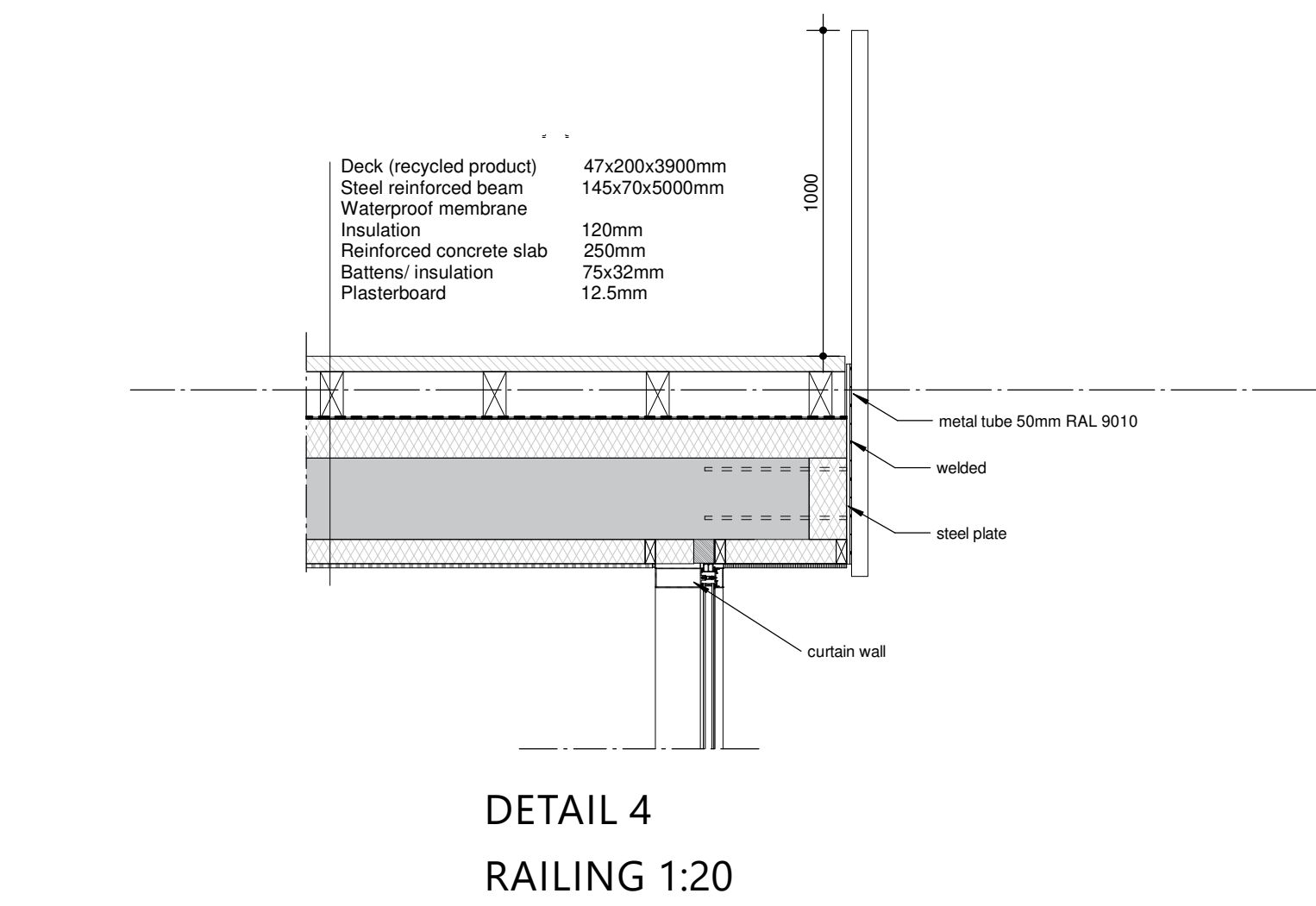
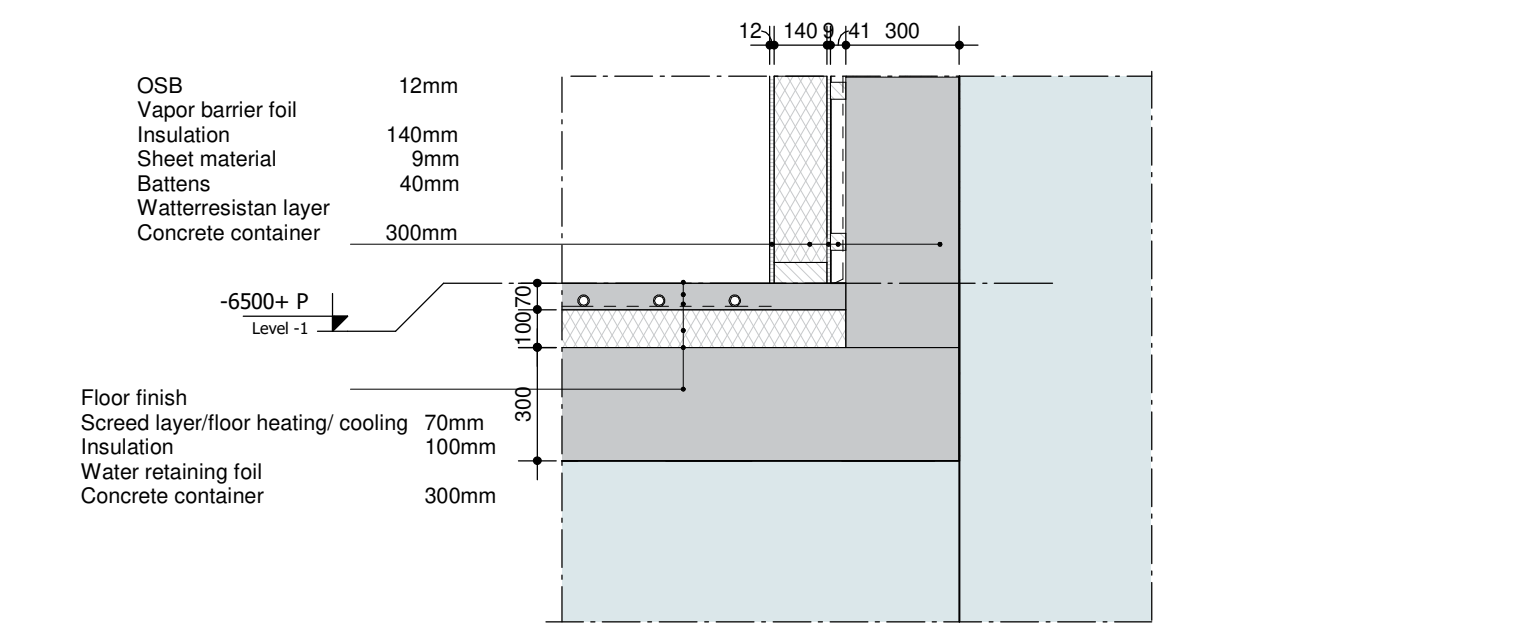
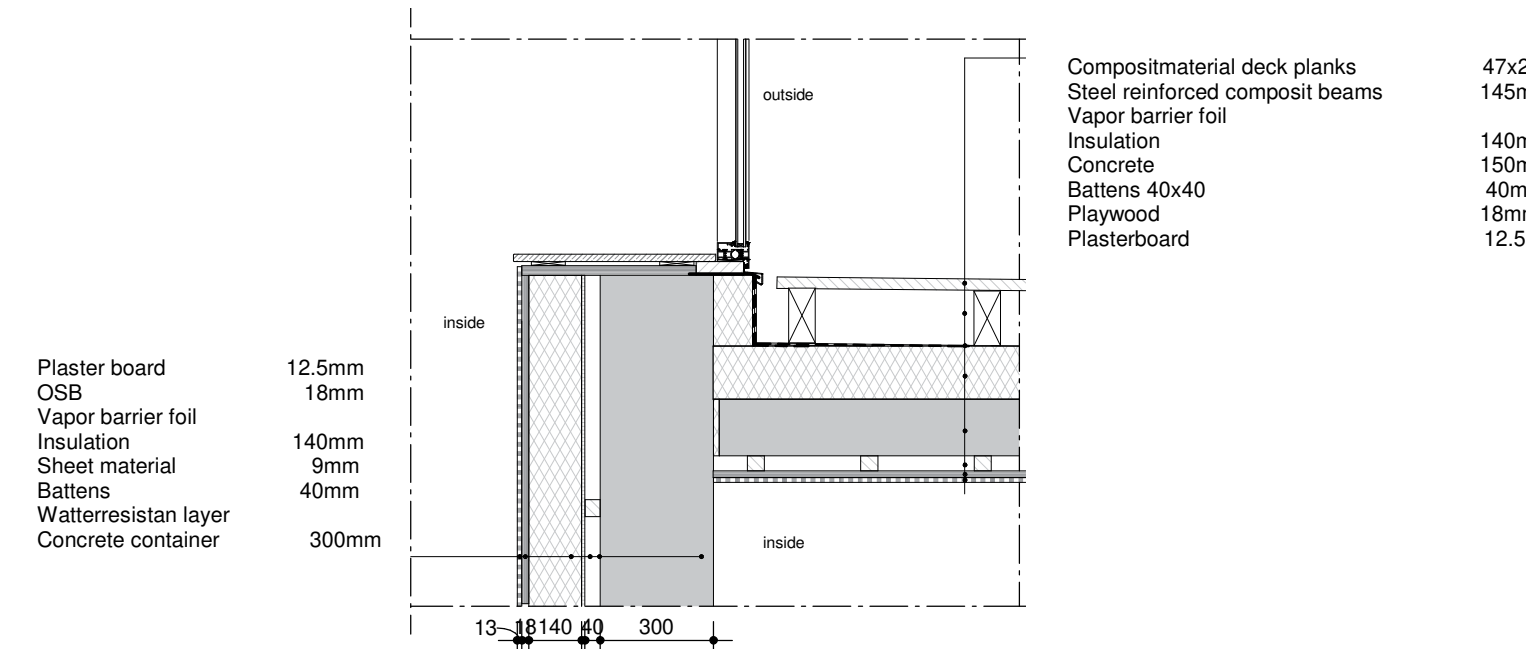
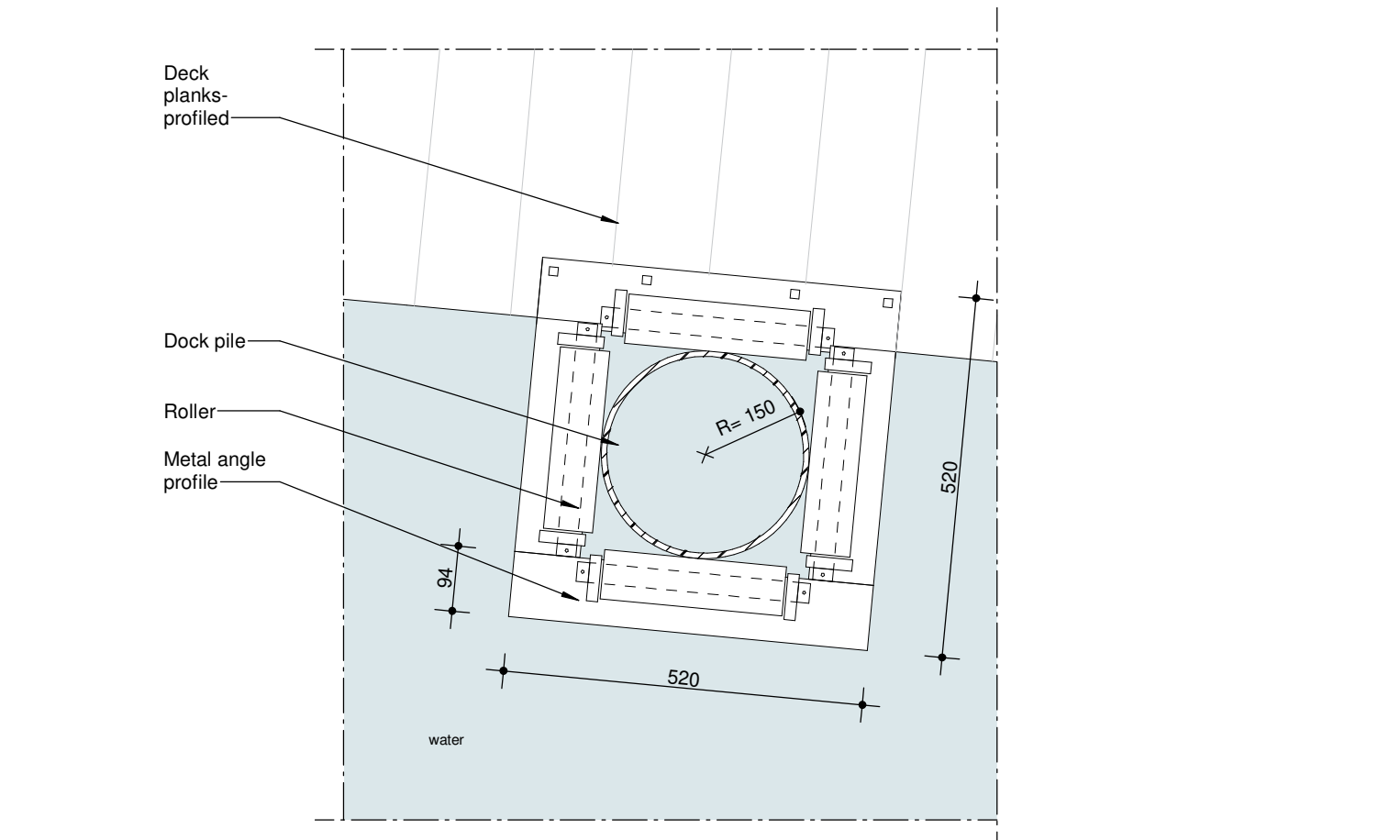
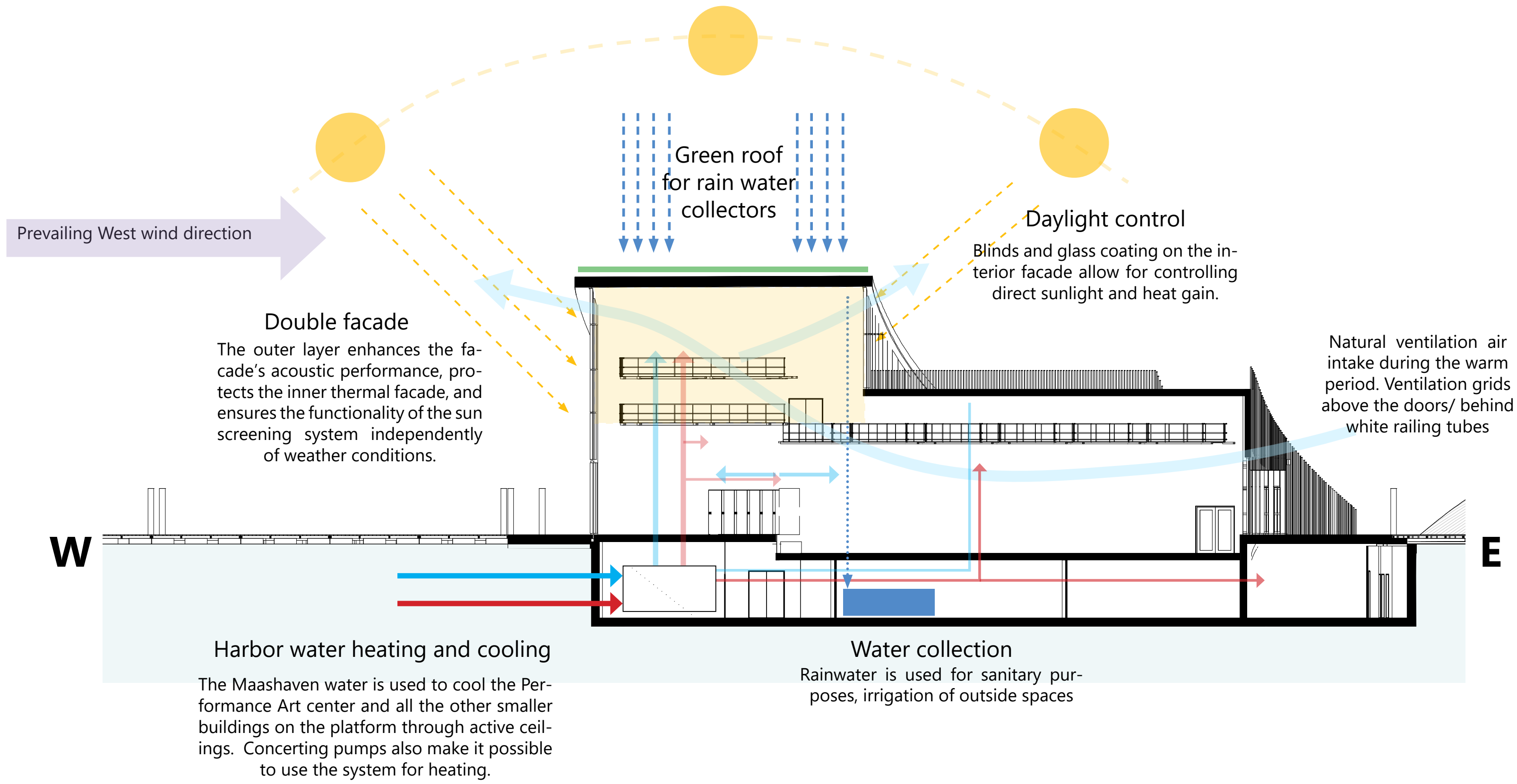
2



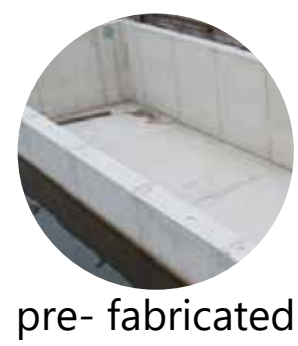
Side float



SECTION A
1:200



OUTDOOR MATERIALS



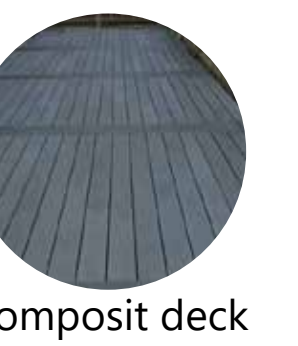
pre- fabricated concrete hull



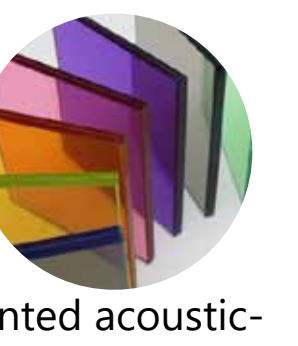
curved edges



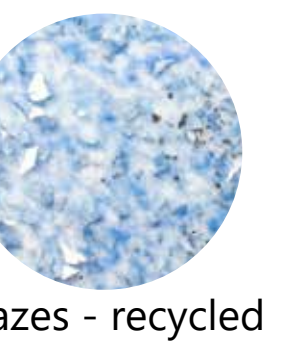
white tube railings



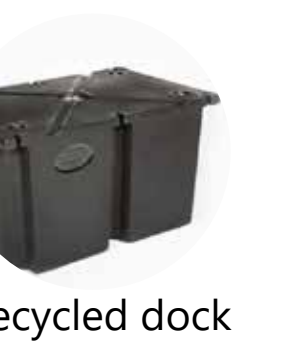
Composit deck



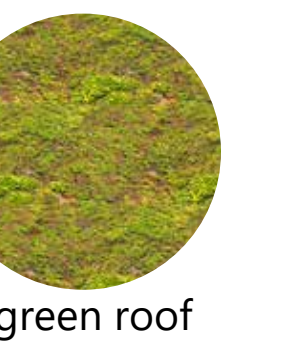
Tinted acoustic-glass colored scheme



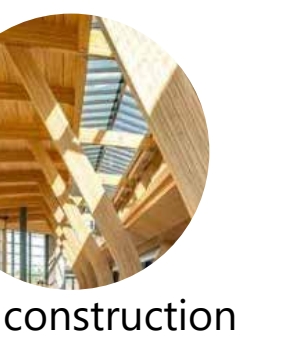
oazes - recycled pet



recycled dock float



green roof



CLT construction

INDOOR MATERIALS



ballet floor



acoustic curtains from flame retardant fabrics

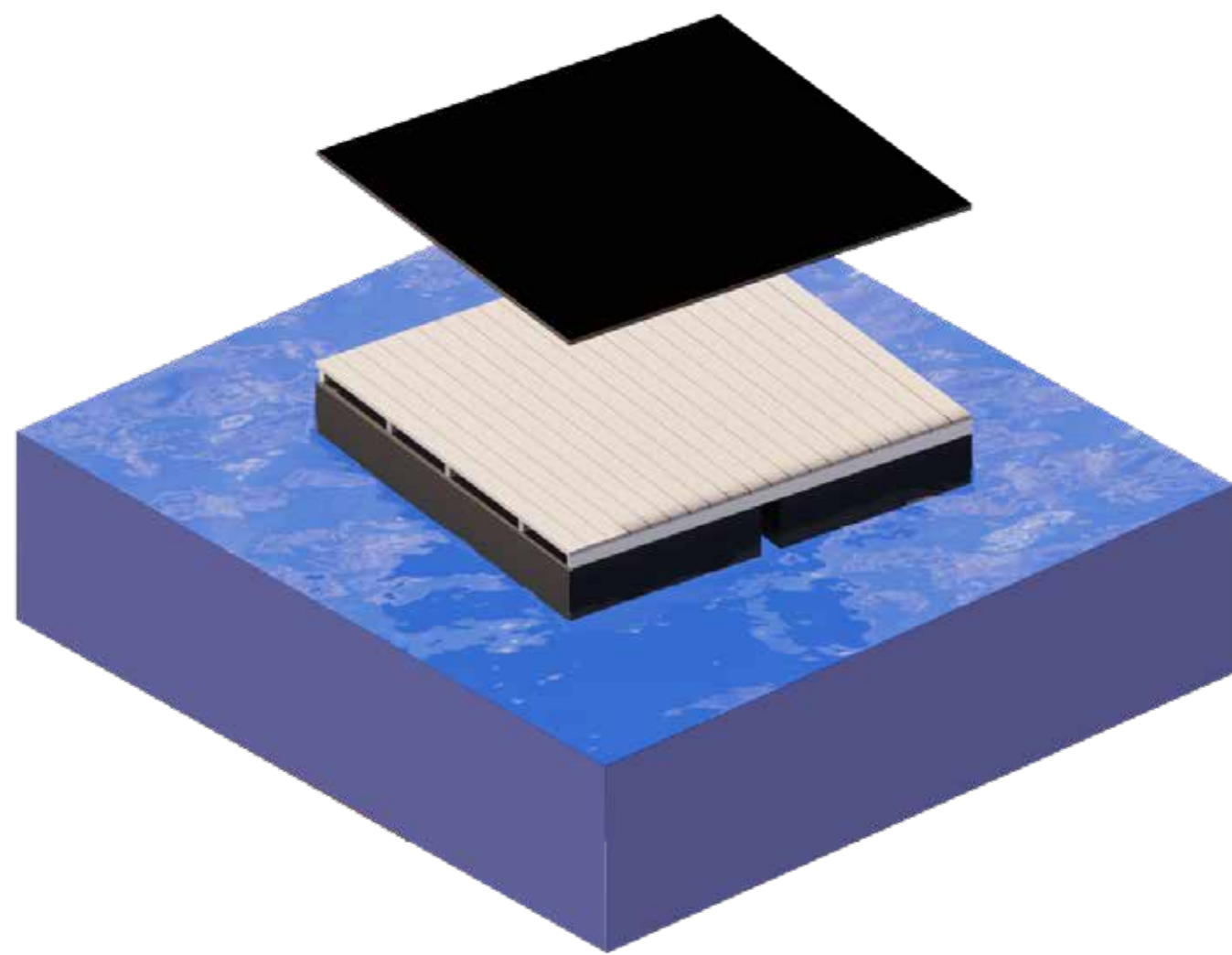
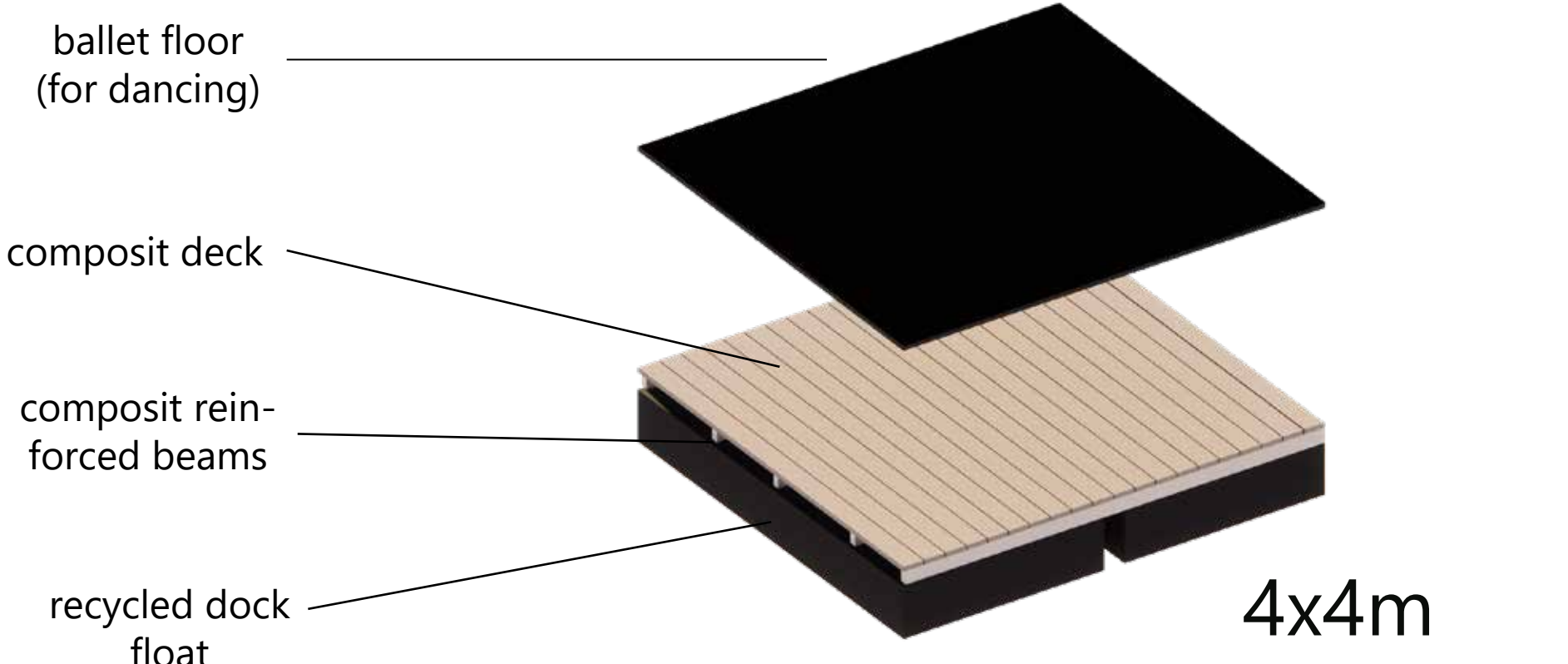


blackout shade

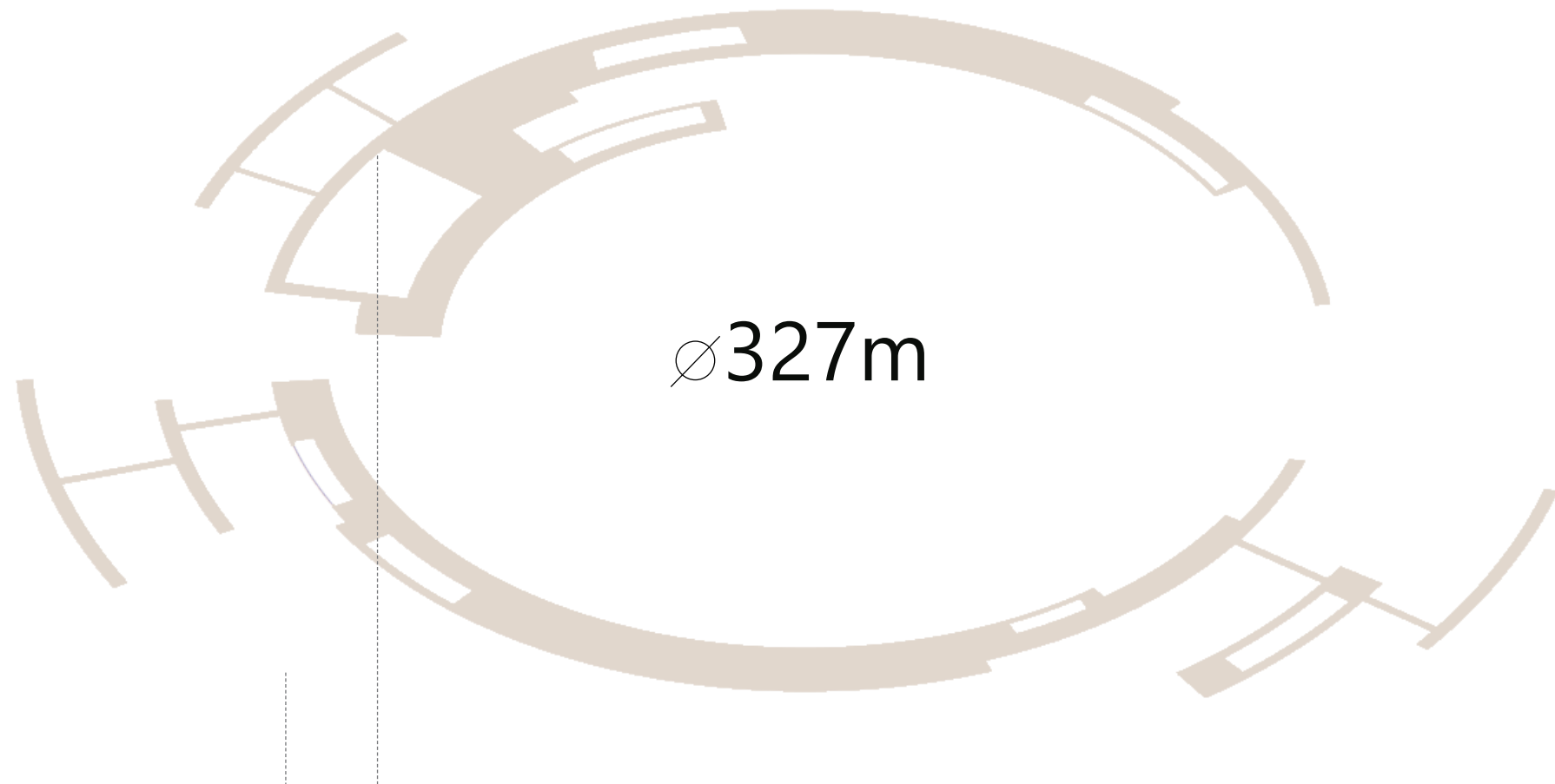


wooden floor

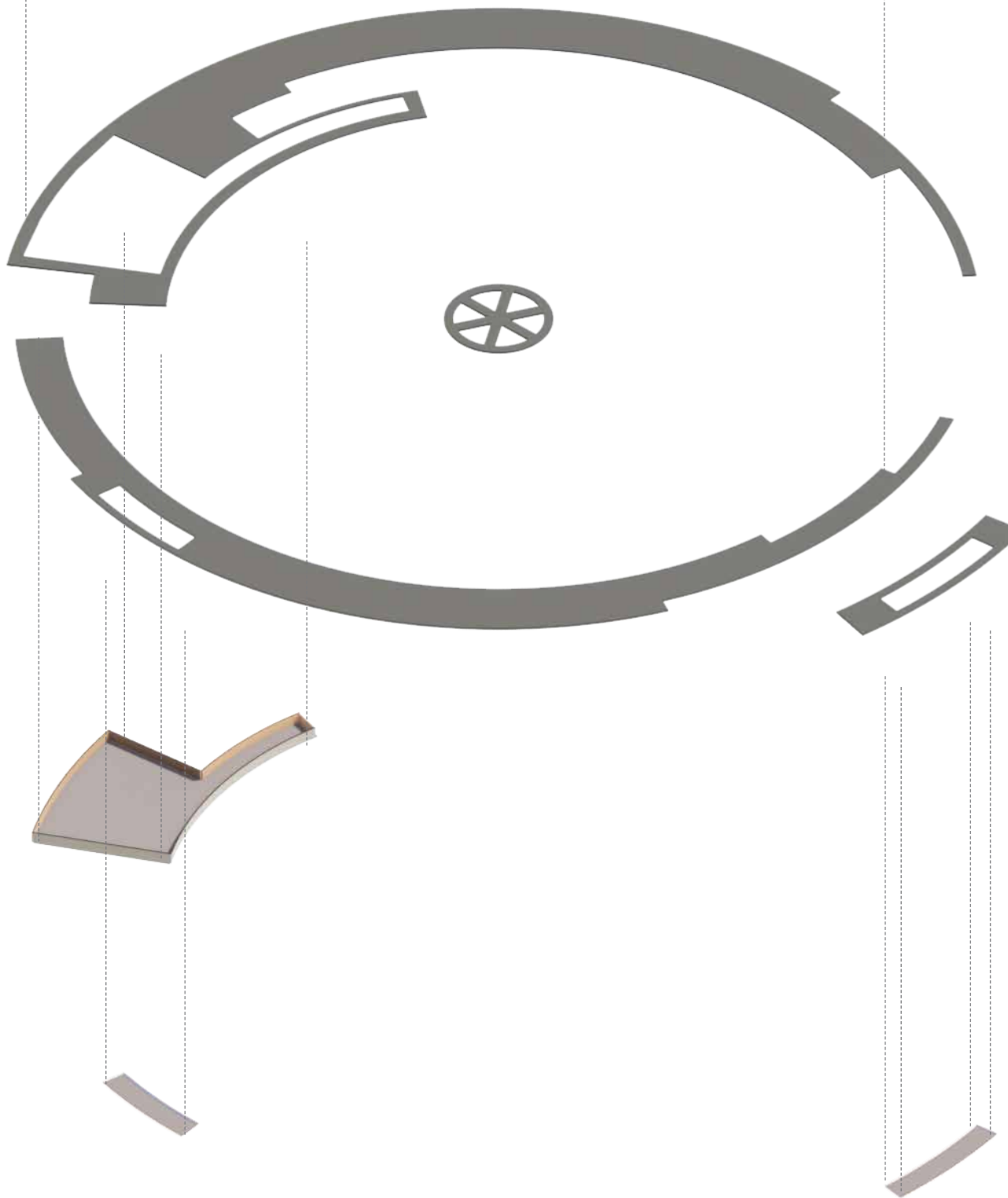
BUILD UP



COMPOSIT DOCK



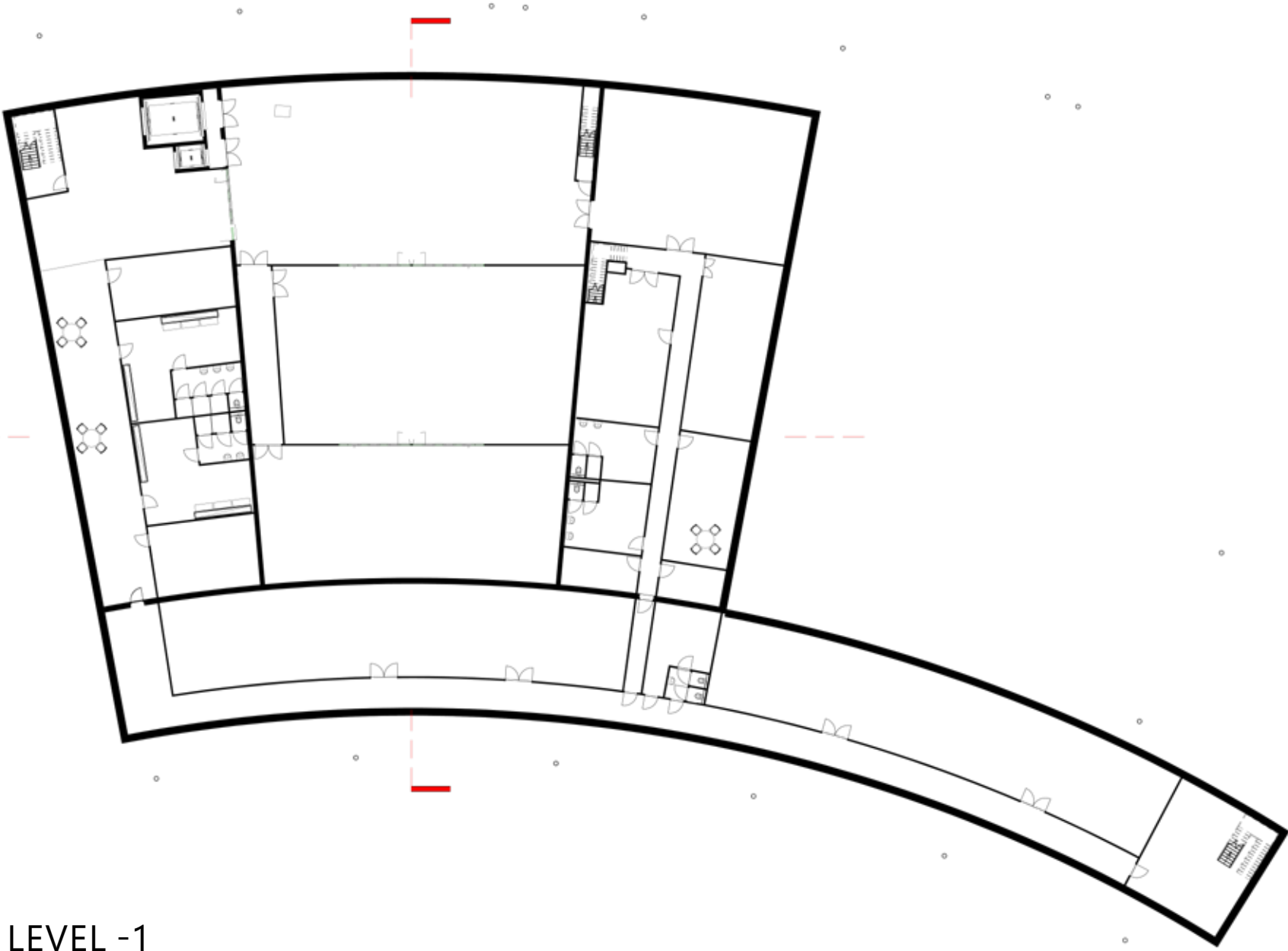
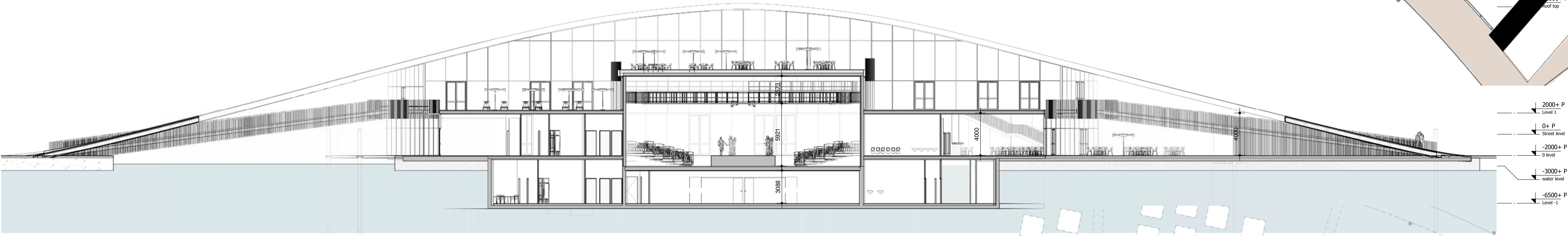
FLEXBASE SURFACE



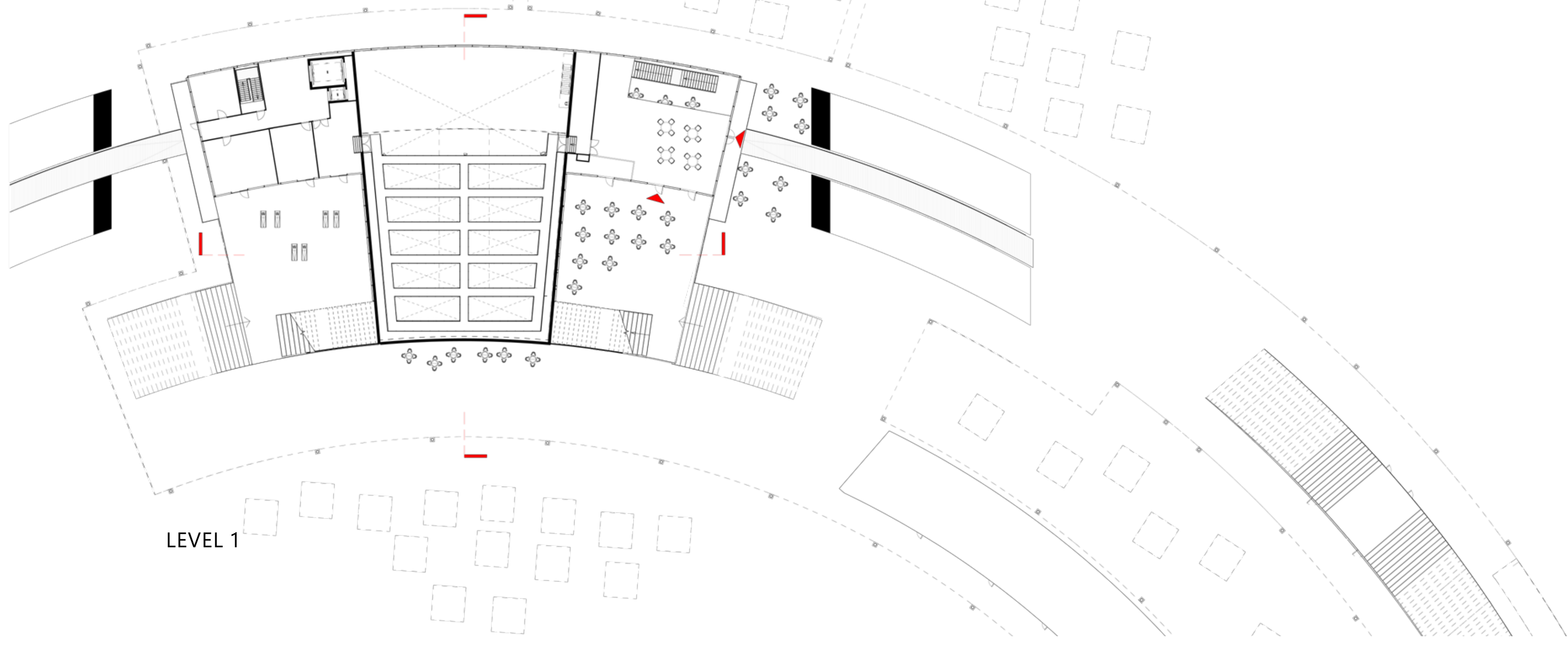
PRE-FABRICATED
CONCRETE HULL



| | |
|-----------------------|-------------------|
| 1 Stage operator | 34m ² |
| 2 Rehearsal studio | 74m ² |
| 3 Rehearsal studio | 65m ² |
| 4 Green room | 56m ² |
| 5 Lobby | 46m ² |
| 6 Janitor | 14m ² |
| 7 Men dressing room | 35m ² |
| 8 Women dressing room | 38m ² |
| 9 Technical space | 20m ² |
| 10 Circulation | 47m ² |
| 11 Scene dock | 111m ² |
| 12 Stage | 255m ² |
| 13 Auditorium | 575m ² |
| 14 Side stage | 31m ² |
| 15 Kitchen | 29m ² |
| 16 Bar | 12m ² |
| 17 Restaurant | 240m ² |
| 18 Lobby | 198m ² |
| 19 Ticket office | 5m ² |
| 20 Cloakroom | 47m ² |
| 21 Men WC | 15m ² |
| 22 Miva WC | 4m ² |
| 23 Women WC | 17m ² |
| 24 Rehearsal studio | 70m ² |
| 25 Rehearsal studio | 59m ² |
| 26 Dressing room | 18m ² |
| 27 Dressing room | 18m ² |
| 28 Lobby | 50m ² |
| 29 Venue space | 158m ² |
| 30 Lobby | 30m ² |



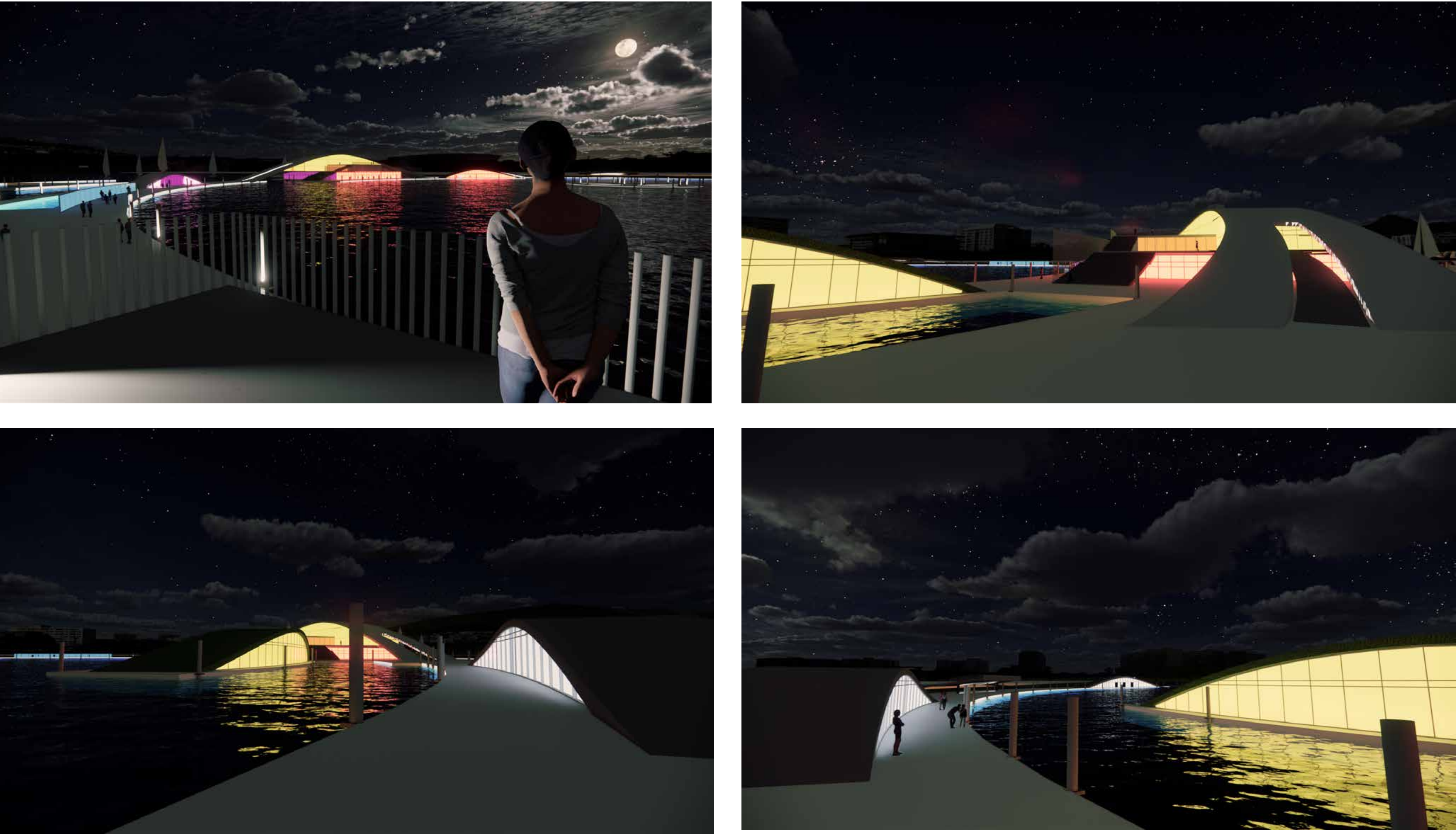
LEVEL -1



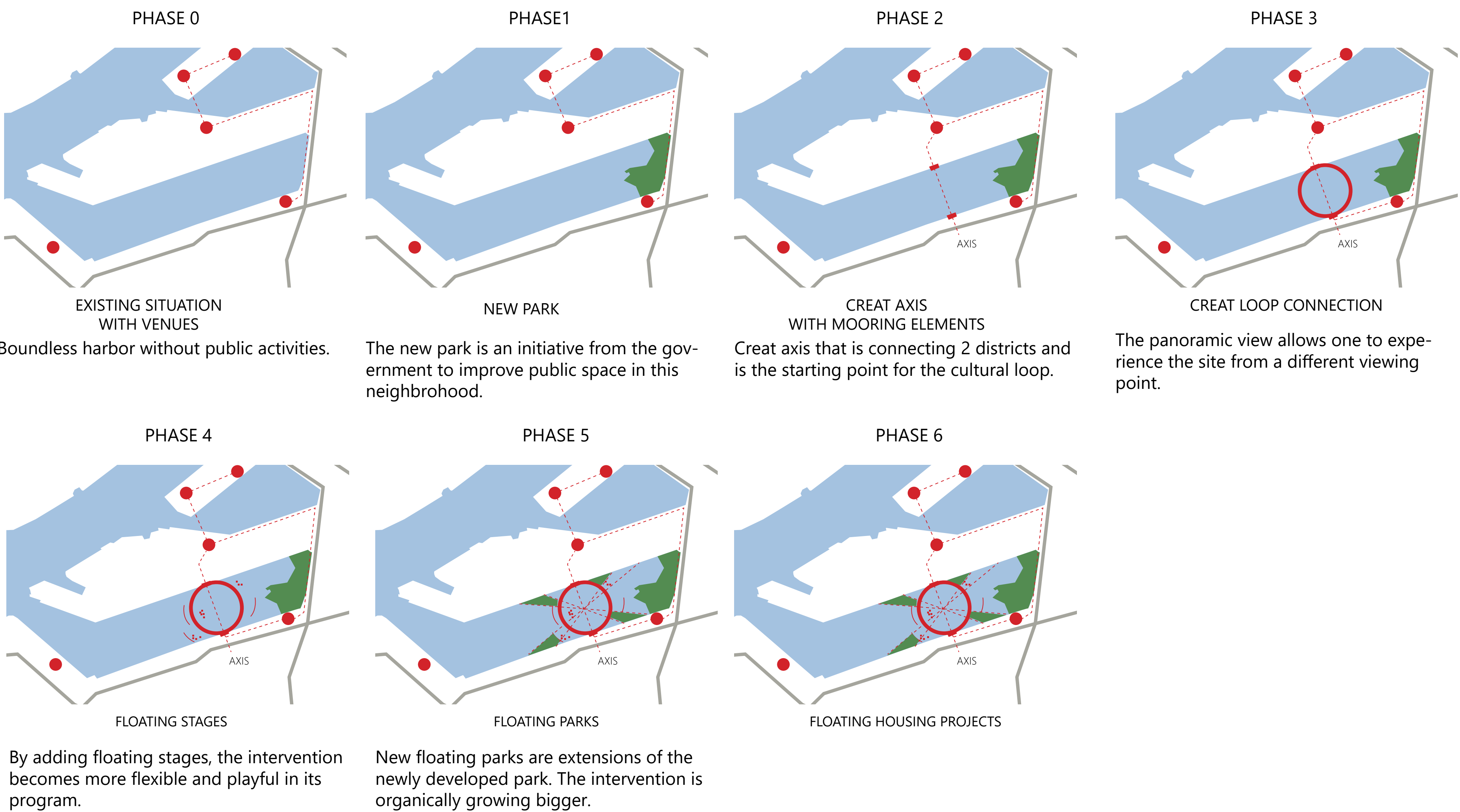
LEVEL 1

NIGHT LIFE

NIGHT ATMOSPHERE
The night atmosphere brings different vibe and notions. The calming water and bright tinted glass create an unforgettable experience. As one moves through the passage, the light and shadows are changing.



PHASES



FUNDRAISING

"Motion on the water" is spectacular in magnificent intervention. It spans across the Maashaven and is great in its size. Nevertheless, this object would appreciate support and fundraising from private persons, organizations, and investors. Therefore there is an option to donate and support this creation. Each donator will have one's name engraved on the dock plank. The result will give a personal touch, and people will feel like a part of the project.

| | |
|--|------|
| | NAME |
| | NAME |
| | NAME |

