

# Adoption of eHealth for Ambulatory Geriatric Rehabilitation

Laurence Alpay, Marije Holstege, Ybranda Koster and Jorit Meesters

12-5-2022



---

Background

---

Goal of the study

---

Methods

---

Results

---

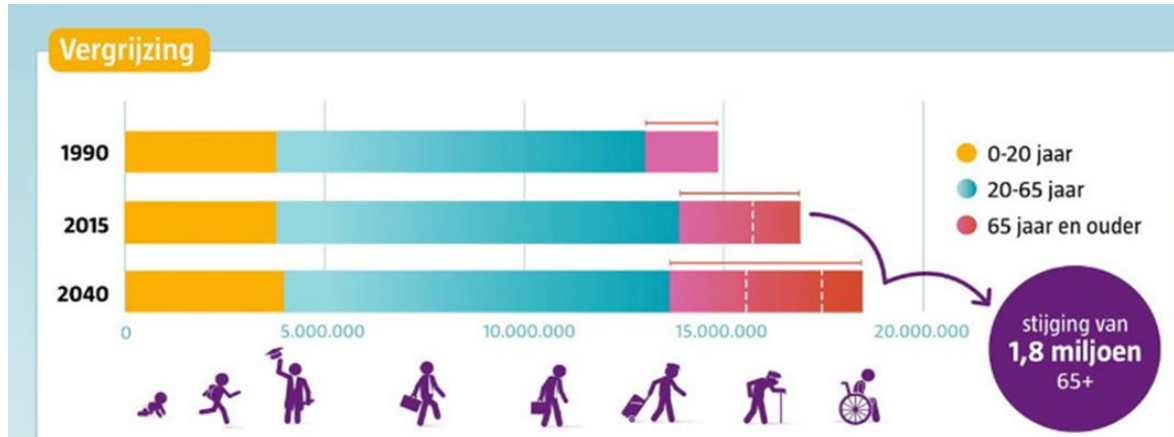
Conclusions

---

Further work

# BACKGROUND

## Growing aging population



## Shortage of healthcare professionals

**Prognoses personeelstekort**

	VVT	Z&W (excl. KO)
2019	29.961	37.469
2020	42.979	53.561
2021	55.869	69.233
2022	63.971	80.068

80% in VVT

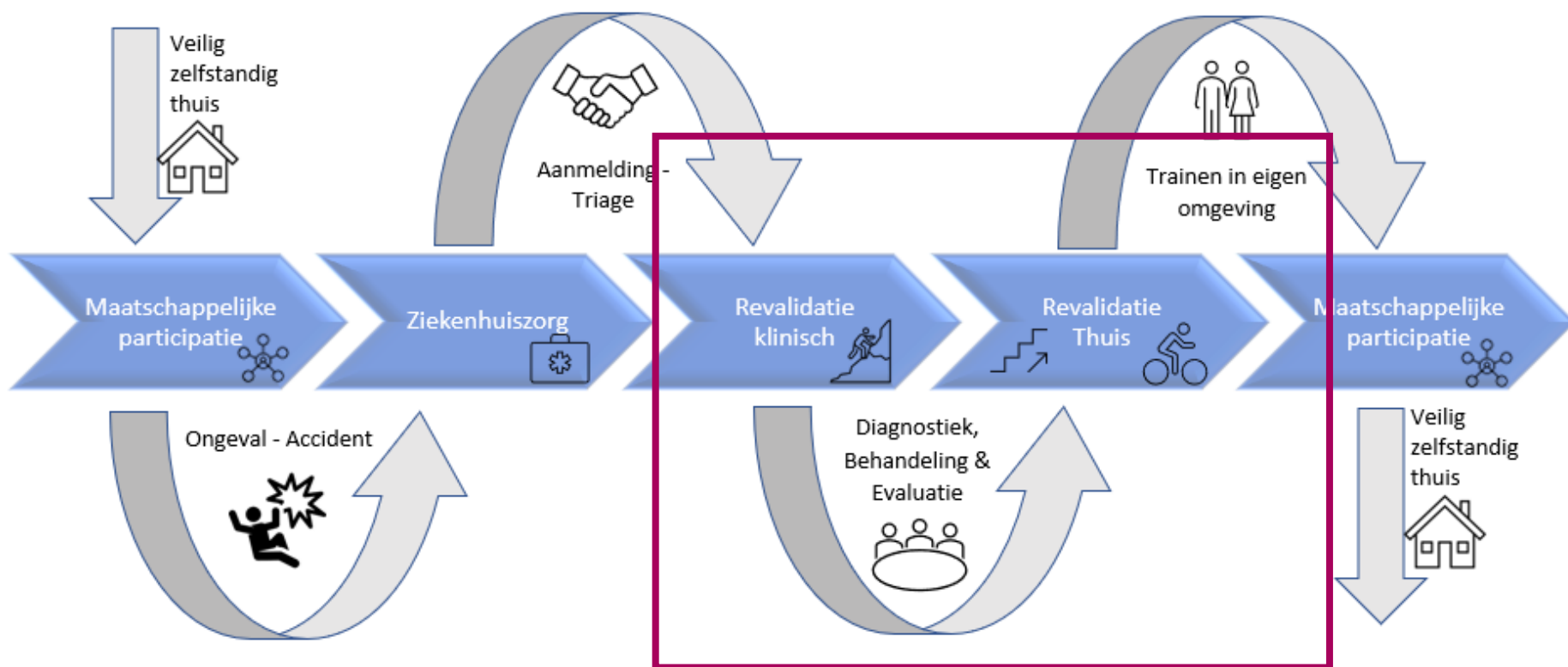
## Increase of chronically ill



## Increase use of eHealth for home rehabilitation



# PATIENT JOURNEY



Geriatric rehabilitation

## CONSORTIUM

- Living Lab focuses on the (further) development of eHealth applications that promote ambulatory rehabilitation of the elderly
- Collaboration with different institutions



## Exploratory study

**Financed:** by Inholland Center of Expertise Prevention in Health & Wellbeing (Inholland.nl/coe-preventie)

### Goals:

1. To gain insights into the attitude of different stakeholders in using *eHealth* for geriatric rehabilitation in ambulatory setting
2. To collect opinions of different stakeholders in the possibilities to use platform *ikoefenzelf.nl* used at Basalt for inpatient rehabilitation of CVA patients



# METHODS (1)

## Qualitative methods



## Data Collection

- Focus groups (FG) & interviews
- In one of the healthcare organizations from the Living Lab



## Data analysis

- FG and interviews: (video) recorded, transcribed and coded



## METHODS (2)

### Participants

- 6 managerial stakeholders

### Topics

- Experience with technology for ambulatory geriatric rehabilitation (home or outpatient setting)
- Facilitating and hindering factors to integrate eHealth in ambulatory geriatric rehabilitation
- Added value and applicability of ioz.nl for ambulatory rehabilitation

**Video:** presentation of ikoz.nl

### Data analysis

- The SPO model (Structure, Process, Outcome)



**Online focus group**



## METHODS (3)

### Participants

- 9 healthcare professionals from different disciplines (physical therapist, occupational therapist, psychologist, nurse)

### Topics

- Based on selected determinants of MIDI instrument (e.g., related to innovation, users, organization)
- Interprofessional collaboration

**Video:** presentation of [ikoz.nl](http://ikoz.nl)

### Data analysis

- Midi instrument



Face to face focus group

## METHODS (4)

### Participants

- 5 patients indicated for ambulatory phase

### Topics

- Needs and wishes to use eHealth for ambulatory rehabilitation
- Transition inpatient rehabilitation to ambulatory setting (at home or outpatient)

**Video:** presentation of [ikoz.nl](http://ikoz.nl)

### Data analysis

- Thematic



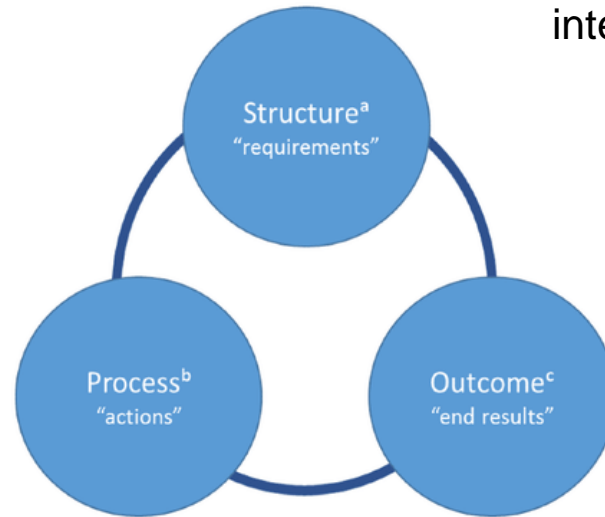
**Interview**

## RESULTS (1)

### Managerial stakeholders

#### a) New eHealth applications:

- should be aligned with the vision of the healthcare organization
- part of the organization's digital infrastructure
- embedded in future development of a regional integral system solution (regional patient platform)



#### b) Focus on:

- Blended care
- Experimental lab

c) Focus on the patient journey: Inpatient setting to outpatient / home rehabilitation

- a. What an organization needs to have to provide health care
- b. The actions in giving and receiving health care
- c. End results as a consequence of providing care

## RESULTS (2)

### Healthcare Professionals

#### With regards to innovation determinants

- Motivation of the patients
- Independently performing exercises at home
- Patient monitoring
- Information sharing

#### With regards to end-users determinants

- Guarantee safety (for patient at home)
- Reduction of loneliness
- Distance coaching

#### Interprofessional collaboration

- Continuity of care
- Information exchange between disciplines and supporting chain of care (e.g., from rehabilitation centrum to primary care)



## RESULTS (3)

### Patients

#### **Favor blended care**

- Patients preferred a combination of face-to-face with the healthcare professionals and the use of eHealth

#### **Communication**

- Importance of face-to-face contact with healthcare professionals
- Instructions about using eHealth devices

#### **Concept eHealth**

- Report of limited to none knowledge of the terminology eHealth
- In practice they used eHealth applications e.g., for e-consult



## CONCLUSIONS & FURTHER WORK

- **Adoption of eHealth**

- eHealth to support ambulatory geriatric rehabilitation is promising for blended care

- **Platform ioz.nl**

- 3 groups of participants are positive about using it for ambulatory rehabilitation - under right conditions and requirements

- **Project GROET 2.0**

- User centered approach: Establish the requirements to embed the applications from the ikoefenzelf.nl platform into ambulatory setting
- Developing persona's / scenario's



Thanks for  
your attention

Questions?

Contact: [laurence.alpay @inholland.nl](mailto:laurence.alpay@inholland.nl)



**inholland**  
**hogeschool**