

## Societal costs of individuals with severe mental illness

S.A. Sanches, W.E. Swildens, J.T. van Busschbach,  
T. Feenstra, A.D.I. van Asselt, J. van Weeghel



## Methods

- Baseline costs of 188 individuals with severe mental illnesses (SMI)
- Participants in ongoing CE study of BPR
- Costs measured with TIC-P questionnaire\*
- 6-months period prior to assessment



\* Hakkaart-van Roijen, L., Straten, A. V., Tiemens, B., & Donker, M. C. H., 2002

## Background

- Ongoing budget cuts makes insight into expenses of value necessary to policymakers and mental health institutions.
- Reliable cost estimate also necessary to assess cost-effectiveness of interventions
- Decisions on reimbursement within health care systems



## Methods

- Total costs:
  - Days in hospital, supported and sheltered housing
  - Contacts with MHC professionals
  - Contacts outpatient medical services, home care
  - Visits to organized activities
  - Prices of (un)prescribed medication,
  - Cost made outside health care
    - informal home care
    - social support
    - unexpected health-related expenditures



## Aim

- To provide insight into the costs associated with severe mental illnesses from a societal perspective.



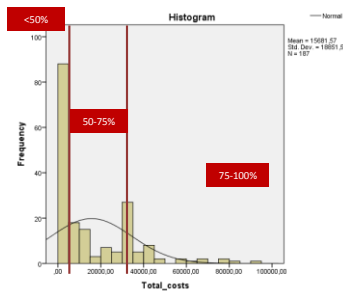
## Baseline characteristics

N=188

Variable	
Gender - Female	42%
Educational level - low	39.4%
Living situation - Independent	56.8%
Clinical diagnosis - Psychosis	60%
Participation – paid/unpaid employment	41.5%
Age	39.89 (11.34)
Illness duration	15.56 (10.76)
Psychiatric symptoms - BPRS	44.61 (SD=13.01)



## Results



## Results

- Significant differences with higher costs for
  - Younger people ( $F(3, 183)=3,302, p = 0.022$ )
  - People in hospital or sheltered living ( $t(180)=8.961, p = 0.000$ )
  - Higher educated people ( $t(184)= -1.320, p = 0.006$ )
  - No paid/unpaid work: ( $t(185)=2.116, p = 0.001$ )
  - Shorter illness duration: ( $t(181)=2.070, p = 0.006$ )
- Chi kwadraat toetsen van maken!!
- Non-significant differences
  - Gender: ( $t(185)= -0.657, p = 0.353$ )
  - Diagnosis: ( $t(182)=2.671, p = 0.056$ )

## Results

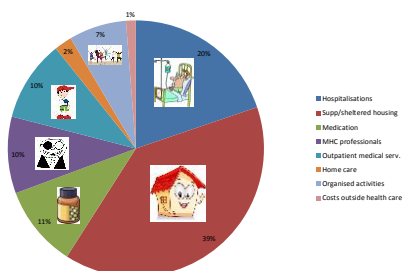
Categorie	Mean	Std. Dev.	Range
Hospitalisations	3420,35	10255,22	0 – 57078,00
Supp/sheltered housing	6793,09	12437,09	0 – 45192,00
Outpatient medical serv.	1772,01	8674,14	0 – 64843,00
Home care	387,39	2353,05	0 – 27040,00
Organised activities	1256,19	3892,11	0 – 23478,00
Prescribed medication	225,69	707,96	0 – 6206,83
Unprescribed medication	17,14	82,86	0 – 1040
Informal home care	9,02	33,47	0 – 262,5
Social support	55,79	182,96	0 – 1955,57
Unexpected expenditures	41,98	217,20	0 – 2000
MHC professionals	1674,72	2324,97	0 – 22804,32
Total	15681,57	18851,54	49,29 – 94562,64

## Discussion

- Not a representative group
- Lack of social support?
- More participation → less costs
- Higher education → more costs
- Risk equalisation: Are the criteria correct?



## Results



Thank you for your attention!

